

Your Donations In Action

2025 Three For Free Raffle Winner

Please join the Foundation in congratulating the winner of the 2025 [Three for Free Raffle](#), **Jeannette Yuen, MD, FASE**. Dr. Yuen will receive complimentary registration to [ASE's 2026 Scientific Sessions](#) in Aurora, Colorado this June! The raffle required a donation of at least \$25 to each of the Foundation's three main fundraisers throughout the year: Spring Giving, ICED Coffee & Tea Day, and GivingTuesday.



"I am thrilled to win the ASE Foundation's 'Three for Free' raffle and look forward to attending the Scientific Sessions in June. As a recently selected Fellow of ASE, I am looking forward to the learning opportunities the Scientific Sessions offer, which will help me to continue contributing to the superb quality of White Plains Hospital's echo lab." – **Jeannette Yuen, MD, FASE**

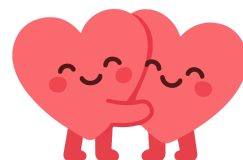
We want to thank everyone who contributed to the Foundation last year. More than **2,500 donors** supported the 2025 Annual Appeal and because of you, we are thrilled to be able to allocate over **\$288,000** to scholarships, travel grants, research opportunities, global outreach events, and more in 2026!

The Foundation will host the raffle again in 2026; this time raffling off a ticket to the **2027 ASE Foundation Research Awards Gala!** To be eligible for the 2026 [Three for Free raffle](#), you must donate at least \$50 to each of these Foundation fundraisers throughout the year: [For the Love of Hearts](#) (February), [Coffee Day](#) (September), and [GivingTuesday](#) (December). The winner will be selected at random. Gala ticket is non-transferrable.

Announcements

For the Love of Hearts Fundraiser

This February, in celebration of American Heart Month, the Foundation will host a '[For the Love of Hearts](#)' fundraiser. We encourage you to donate for the love of hearts! Donations will be accepted between **February 8 - 15**. Follow ASE on social media to hear from ASE members about what the Foundation means to them and why they give. **This is the first fundraiser in the 2026 [Three for Free Raffle](#)**; if you want to be eligible to win a 2027 Gala ticket, make sure you **donate at least \$50 between February 8 - 15!**



Research Funding Available

2026 Pamela S. Douglas Research Scholar Award

Applications Due: February 17, 2026

Application for the [2026 Pamela S. Douglas, MD, FASE Research Scholar Award](#) is open! This award will grant a one-year (12 months) scholarship of \$75,000 to support a clinical or translational research scholar in advanced cardiovascular ultrasound research. More information available [here](#).

Application closes **February 17, 2026 at 5:00 PM ET**.



FUNDING OPPORTUNITY

The Pamela S. Douglas, MD, FASE Research Scholar Award supports clinical or translational scholars in advanced cardiovascular ultrasound research.

- ✓ Apply now through February 17, 2026
- ✓ The program will provide one grant of \$75,000 USD

APPLY NOW



ASE Foundation ANNUAL APPEAL

Making a WORLD of Difference

It's not too early to start thinking about your 2026 charitable contributions. Learn about the numerous ways you can give to the ASE Foundation [here](#).

[Donate to the ASE Foundation](#)

American Society of Echocardiography | 2530 Meridian Parkway Suite 450 | Durham, NC 27713 US

[Unsubscribe](#) | [Update Profile](#) | [Constant Contact Data Notice](#)

