



# ASE Foundation

## NEWSLETTER

# 2019 FALL



## IN THIS ISSUE:

Letter from the Chair	2
Annual Appeal Update	3
News & Events	
All the Buzz: Coffee Day 2019	
Giving Tuesday 2019	
2020 Council Travel Grant Cycle	4
Your Donations in Action:	
ASEF Volunteers Travel to China and Kenya	5-8
ASE's Involvement with Chagas Disease	9
Maximize Your Giving and Lessen Your Tax Burden	10
Year End Giving Tips	11
Thank You to Our 2019 Annual Appeal Investors	12-13

# Greetings from the New Chairman

David Rubenson, MD, FASE, 2019 - 2020 Foundation Annual Appeal Committee Chairman



Happy Giving Season, everyone! I have to agree with my predecessor, Jose Banchs, MD, FASE, that this time of year really brings out the best in people. As we approach the end of 2019, I am extremely happy to report that as of October 31, the ASE Foundation has reached 96% of our \$250,000 annual appeal goal, raising \$241,246.98. This includes the proceeds from our **most successful** Research Awards Gala to date, which raised **\$106,399.94**. Thank you to everyone who had a part in making this evening such a success!

Speaking of successes, the ASE Foundation hosted two wonderful outreach events over the summer. During the first week of September a team of seven ASE Foundation volunteers travelled to central China to participate in free patient scanning and physician training events spanning multiple sites. The week concluded with the 3rd Xijing International Summit Forum on Cardiovascular Ultrasound, where our volunteers presented lectures on various heart ultrasound topics alongside Chinese physicians from the across the country. Read more about this event on page 5. Another ASEF volunteer team travelled to Eldoret, Kenya to participate in a separate global health event. The team volunteered in outreach activities at multiple primary schools, surveying children for rheumatic and congenital heart disease. They also led a formal educational symposium with didactic lectures and hands-on applications training for local clinicians. For more details from this experience, see page 6.

In the summer newsletter, we shared that final data for the World Alliance Societies of Echocardiography (WASE) Normal Values Study had been selected for presentation as Late-Breaking Science during the European Society of Cardiology (ESC) Congress in Paris. Federico Asch, MD, FASE, who presented the WASE results at the ESC Congress, recently returned from giving another presentation, this one on Chagas Disease. You may remember that Chagas Disease was the focus of one of ASEF's global health outreach events in 2018. Dr. Asch represented ASE as the only U.S.-based speaker at the congress. More information can be found on page 8.

The last weekend of September we celebrated *National Coffee Day* by encouraging you to 'Donate A Cup' to ASEF. We used this opportunity to unveil the new donation page that

we created for specific fundraising campaigns. The response was overwhelming, and thanks to 50 donors, we surpassed our fundraising goal and raised **\$4,160**.

All October long we celebrated *Medical Ultrasound Awareness Month* by encouraging donations in honor of sonographers. Five donors honoring sonographers who play important roles in the lives of their patients and those with whom they work. Sonographer-honoring contributions totaled **\$3,965**. As a reminder, you can make a donation in honor or memory of someone at any time. Just select the "Dedicate" button when making your next contribution to the ASE Foundation.

Our final big fundraising event of the year will be *Giving Tuesday* and this year it falls on December 3rd. For the seventh year we will be joining the global giving movement and have increased our fundraising goal to \$ 20,000. Every year we have surpassed our goal so this year we decided to kick it up a notch! With that said, we'll need your help. We are so close to our annual appeal goal, and I have a feeling this last push will help us to achieve it. Contact Mary Carmody at [MCarmody@asecho.org](mailto:MCarmody@asecho.org) if you'd like to make an early pledge.

You may have seen your 2020 ASE dues renewal invoice in the mail. This year a suggested \$20 donation to the ASE Foundation is included. I encourage you to accept this donation. The \$20 donation is also included if you renew online. It can be removed from your cart at checkout or better yet, you can increase your donation amount by clicking "Donate to ASEF" in the top right corner before check out. This will

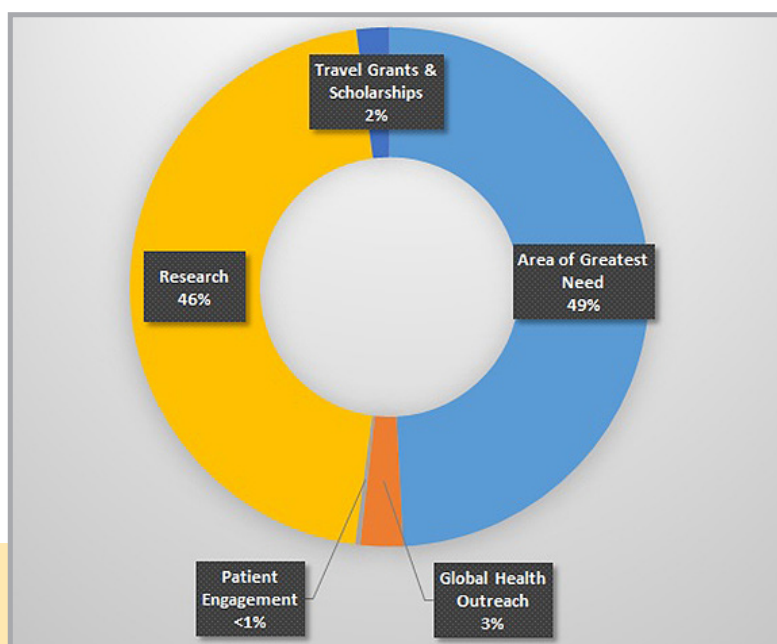
bring you to the donate page and you can add any donation amount you'd like to your order. Just imagine, if every member gave \$20, we'd raise almost \$350,000!

Looking back on what we've accomplished and looking ahead to the rest of the year, I feel grateful for all of you, our very generous donors. Thank you for all that you do. I hope you have a healthy and happy holiday season.

“Looking back on what we've accomplished and looking ahead to the rest of the year, I feel grateful for all of you, our very generous donors.”

# Annual Appeal Update

The ASE Foundation has reached 96% of its \$250,000 fundraising goal for the 2019 Annual Appeal, raising \$241,246.98! Donors have allocated their gifts as follows:



In addition to the 1,117 donors who have contributed to the Annual Appeal (see pages 11-12) we are honored to thank the following partner organizations:

## 2019 Annual Appeal Supporters

ASE Leadership Academy  
Asian-Pacific Association of Echocardiography  
Bracco Diagnostics Inc.  
CAE Healthcare  
Cleveland Clinic  
Council on Pediatric & Congenital Heart Disease  
Council on Perioperative Echocardiography  
Duke University Medical Center  
Duke Anesthesiology  
Houston Methodist Hospital  
Intersocietal Accreditation Commission  
Johns Hopkins University  
Lantheus Medical Imaging, Inc.  
Mayo Clinic Department of Cardiovascular Medicine  
MedStar Research Institute  
National Board of Echocardiography, Inc.  
Northwestern Medicine  
Ochsner Echo Lab  
Oregon Health & Science University  
Spokane Community College Alumni & Friends  
TOMTEC Corporation

## 2019 Partners in Care

Financial grant support, in-kind equipment, and logistical arrangements for global health events.

Edwards Lifesciences Foundation

### *Yan'an, China September 2019*

Xijing Hospital  
Dongguan Cardiovascular and Cerebrovascular Disease  
Specialist Ward, a Yan'an University Affiliated Hospital  
Siemens Healthineers  
Phillips China  
Hitachi

### *Eldoret, Kenya September 2019*

Kenya Cardiac Society  
Moi Teaching and Referral Hospital  
GE Healthcare  
Hitachi Healthcare Americas

## In-kind Research Support for the World Alliance of Societies of Echocardiography (WASE) Normal Values Study

Medidata  
MedStar Health  
TOMTEC IMAGING SYSTEMS GMBH  
University of Chicago

## Ongoing Support through Multi-Year Grants for 2019 Travel Grants and Scholarships

Elsevier Inc.  
National Board of Echocardiography, Inc.  
TOMTEC IMAGING SYSTEMS GMBH  
UltraEcho, Ltd.

*Every gift is meaningful. Every contribution makes a difference. Show us #YourPriority at [ASEFoundation.org/Donate](https://asefoundation.org/Donate) and know that 100% of every dollar given supports ASEF's work to grow echo worldwide. Together, we can make a world of difference!*





## UPCOMING EVENTS 2019

**December 3** – Giving Tuesday

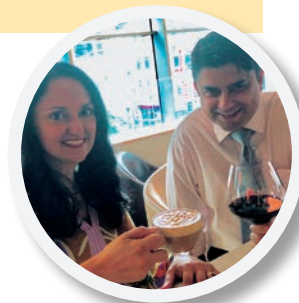
**December 31** – Last day to donate to the 2019 Annual Appeal

## ALL THE BUZZ! National Coffee Day 2019



This past September we found out just how much our donors love coffee and it's a lot! To celebrate *National Coffee Day*, which falls on September 29th every year, we asked you to 'Donate A Cup To ASEF' and set a fundraising goal of \$2,500. Donations were accepted from September 28 – 30 through a new donation webpage which we plan to use for

specific fundraisers like this in the future. We encouraged contributions in dollar amounts like \$5 for one cup of coffee and \$50 for a whole pot. Donors helped spread the word by posting #GaveACup on social media when they made their contribution. When all was said and done, 50 donors had given \$4,160 – much more than our goal! Thank you to everyone who energized the ASE Foundation with their contributions.



## SAVE THE DATE – GIVING TUESDAY 2019

Giving Tuesday 2019 is December 3rd. Mark your calendars now and plan to donate on this national day of giving! ASEF has set a fundraising goal of **\$20,000** and we will need your help to reach it! Making your Giving Tuesday donation will be VERY simple with our special donation web page which will be live starting at 4:00 PM, December 2nd through 12:00 PM December 4th. Thanks to our generous donors, we have surpassed our stated goal the past five years – let's keep the trend going. Interested in making an early pledge? Contact [MCarmody@ASEcho.org](mailto:MCarmody@ASEcho.org) to record your pledged amount. You just may inspire others to join you!



## 2020 COUNCIL TRAVEL GRANTS CYCLE Will Open in January

These \$1,000 travel grants are part of an ongoing effort by the ASE Foundation, with the assistance of the Council Steering Committees, to encourage trainees to focus on sub-specialty practice. By facilitating their attendance at the Scientific Sessions, the grants provide trainees with a deeper understanding of the imaging field, and cultivate the development of meaningful

mentoring relationships with established imaging faculty.

Applications for the 2020 cycle will open in January until April 3, 2020 and support attendance at the ASE 2020 Scientific Sessions, which will be held June 19 - 22 in Denver, Colorado. For more information contact [NRead@ASEcho.org](mailto:NRead@ASEcho.org) for instructions.

# Your Donations in Action: ASEF Volunteers Travel to China

During the first week of September, seven ASE Foundation volunteers participated in free patient scanning and physician training events spanning multiple sites in central China. Two and a half days of scans were held at a children's welfare home in Yan'an, the Ganquan People's Hospital, and the Zhidan People's Hospital.

Our volunteers worked side by side with local physicians,

which provided the perfect opportunity to collaborate and share knowledge. The week concluded with the 3rd Xijing International Summit Forum on Cardiovascular Ultrasound with the team presenting lectures on heart ultrasound topics alongside Chinese physicians from across the country. To learn about this event, visit [ASEFoundation.org/China-2019/](http://ASEFoundation.org/China-2019/) or read the article in [Echo magazine](#).

## By the numbers

Patient Outreach – 2 ½ days, 3 sites, 625 patients scanned

Training – 1 day, over 300 in attendance on site, over 11,000 live streamed online

## Team Leaders

Cynthia C. Taub, MD, FASE – Montefiore Medical Center, New York, NY, USA

Liwen Liu, MD – Xijing Hospital, Xi'an, China

## Medical Team

Robin Billman, RN, BS, RDCS, CHFN – St. Joseph's Medical Center, Brainerd, MN, USA

Nancy Cutler, MD, FASE – University of Michigan, West Bloomfield Township, MI, USA

Rajesh Janardhanan, MD, FASE – University of Arizona, Tucson, AZ, USA

Yan Wang, RDCS, FASE – The Children's Hospital of Philadelphia, Philadelphia, PA, USA

Neil Weissman, MD, FASE – MedStar Health and Georgetown University, Washington DC, USA

Feng Xie, MD – University of Nebraska Medical Center, La Vista, NE, USA

Staff Liaisons: Mary Carmody and Robin Wiegink, MNPL

## Institutional Partners

Xijing Hospital

Dongguan Cardiovascular and Cerebrovascular Disease  
Specialist Ward of the First Affiliated Hospital of Yan'an University

## Industry Supporters

Siemens Healthineers

Phillips China

Hitachi

Supported by donor contributions to the Annual Appeal and a the  
Edwards Lifesciences Foundation *Every Heartbeat Matters* program.





# Your Donations in Action: ASEF Volunteers Travel to China



# Your Donations in Action: ASEF Volunteers Travel Back to Kenya

**A**fter months of planning, 10 ASE members gathered for the first time on September 14 in Nairobi. In collaboration with the Kenya Cardiac Society (KCS), we developed a Joint Symposium on Congenital Heart Disease. KCS leadership Drs. Bernard Gitura, Bernard Samia, and Christine Jowi recruited local clinicians from across Nairobi to engage with the ASEF team in a full day of didactic lectures and hands-on applications training. The team then spent the following six

days in Eldoret working with the Moi Teaching and Referral Hospital (MTRH). Together with a large group of local nurses, clinical officers, and sonographers, they visited three primary schools (for children ages 6-13) and one secondary school (for children ages 14-18) to assess for undiagnosed rheumatic and congenital heart disease. To learn more about this event, visit [ASEFoundation.org/Kenya-2019](https://ASEFoundation.org/Kenya-2019) and read our article in [Echo magazine](#).

## By the numbers

Patient Outreach – 6 days, 4 schools, 1,229 students scanned plus many adult teachers

Training – 1 day, over 70 local clinicians from across Nairobi

### Team Leaders

Michael Foster, RCS, RDCS, FASE – Duke University Medical Center, Durham, NC, USA and Moi Teaching and Referral Hospital, Eldoret, Kenya

Myra Maghasi, MD – Moi Teaching and Referral Hospital, Eldoret, Kenya

Gregory Tatum, MD, FASE – Duke University Medical Center, Durham, NC, USA

### Team Members

Brittany Byrd, BS, RDCS, FASE – Raleigh, NC, USA

Emmily Chesire, MD – Moi Teaching and Referral Hospital, Eldoret, Kenya

Emmah Chesoli – Moi Teaching and Referral Hospital, Eldoret, Kenya

Francis Dagala – Eldoret, Kenya

Vena David – Moi Teaching and Referral Hospital, Eldoret, Kenya

Suzanne Davy-Snow, BSc, DMU – Starship Childrens Hospital, Auckland, New Zealand

Gregory Ensing, MD, FASE – University of Michigan CS Mott Children's Hospital, Ann Arbor, MI, USA

Gregory Frary, BS, RDCS, FASE – Children's Hospital of Illinois, Peoria, IL, USA

Brittney Guile, BS, RDCS – University of Chicago Ann & Robert H. Lurie Childrens Hospital, Chicago, IL, USA

Jill Inafuku, BS, RDCS, RDMS, FASE – Tripler Army Medical Center, Kaneohe, HI, USA

Pauline Kebenei – Moi Teaching and Referral Hospital, Eldoret, Kenya

Daniel Kemei – Moi Teaching and Referral Hospital, Eldoret, Kenya

Joyce Kipkeih – Moi Teaching and Referral Hospital, Eldoret, Kenya

Timothy Koech – Moi Teaching and Referral Hospital, Eldoret, Kenya

Oliver Korongo – Moi Teaching and Referral Hospital, Eldoret, Kenya

Joy Marsha – Eldoret, Kenya

Salome Ngeong – Moi Teaching and Referral Hospital, Eldoret, Kenya

Gedion (Titus) Ngeno, MD – Moi Teaching and Referral Hospital, Eldoret, Kenya and Duke University Medical Center, Durham, NC, USA

Rachel Onyango – Moi Teaching and Referral Hospital, Eldoret, Kenya

Ernesto Rivera, MD – The Permanente Medical Group, Sacramento, CA, USA

Josephat Sabilah – Moi Teaching and Referral Hospital, Eldoret, Kenya

Melissa Wasserman, RDCS, RCCS, FASE – Children's Hospital of Philadelphia, Philadelphia, PA, USA

Staff Liaison: Andrea Van Hoever, MSGH

### Partners in Care

Kenya Cardiac Society

Moi Teaching and Referral Hospital

GE Healthcare

Hitachi Healthcare Americas

Supported by donor contributions to the ASE Foundation and in-kind contributions from our Partners in Care.



# Your Donations in Action: ASEF Volunteers Travel Back to Kenya





# ASE's Involvement with Chagas Disease Expected to be the Catalyst for More Action

Dr. Federico Asch, from MedStar Health, recently represented ASE as the only U.S.-based speaker at a congress in Mexico City commemorating the 110-year discovery of Chagas Disease. Dr. Asch's involvement as co-chair of ASE's [2018 guideline document on Chagas Disease](#) (translated into [Spanish](#), [Portuguese](#), and [Chinese](#)) and his role as the ASE leader of "Project Chagas," an ASE Foundation (ASEF) global health initiative that focused on pre-identified patients diagnosed with Chagas Disease, made him a

logical choice for this speaking engagement.

A collaboration between government and academia, the three-day meeting was organized by Universidad Nacional Autonoma de Mexico, one of the largest public universities in Latin America, and CENAPRECE, the preventative disease group within Mexico's national Department of Health. The overarching goal was to increase

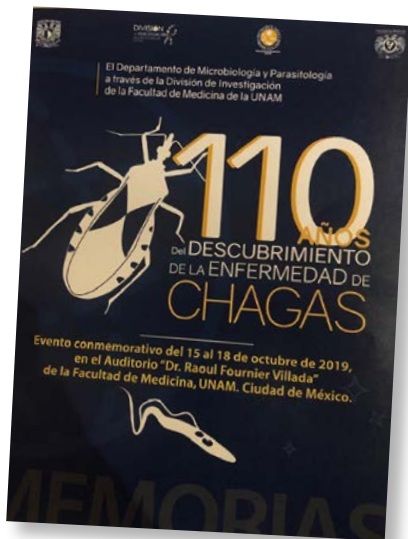
awareness of Chagas Disease among the community and to understand the status of multiple initiatives being conducted at a regional and national level to improve disease detection and treatment through collaborations between institutions and caregivers at different levels. The meeting focused on three sections – the parasite, the vector, and the disease – and was attended by microbiologists, epidemiologists, and physicians, mostly from within Mexico. Dr. Asch's presentation was on the findings of the ASEF Project Chagas activity in Mérida, which were previously presented at ASE Scientific Sessions 2019 in Portland.

The goal of ASEF's Project Chagas was to investigate the prevalence of Chagas cardiomyopathy, detect those individuals previously undiagnosed, and connect them with local cardiologists who would provide proper cardiac care within the regional public system. ASE physician and sonographer volunteers worked alongside representatives from CENAPRECE and the Yucatan Health Service, volunteers from the National Cardiology Association of Mexico (ANCAM), and industry partners from Philips Mexico Commercial S.A. de C.V. The event was hosted by the

project's institutional partner, Hospital General Agustin O'Horan in Mérida.

When asked about his impressions of the meeting, Dr. Asch stated, "My main takeaway was how the ASEF/ANCAM experience brings a call for reality, understanding how underdiagnosed the cardiac disease of Chagas is, and how it brings an opportunity for action to detect and treat these people. The wide interest from experts around the country and the Public Services was strong and their intent for expanding Project Chagas into other regions of the country is there. We expect to be the catalyst for that action."

For more information about cardiac imaging of patients with Chagas Disease, read the [2018 ASE guideline document](#), and also [this information about "Project Chagas,"](#) the ASEF global health initiative held in August 2018 in Mérida, Yucatán, México.



*The Chagas conference gave representatives from ASE and Mexican government and academia the opportunity to come together. Left to right: Dra. Bertha Espinoza Gutierrez, UNAM, CDMX; Dr. Federico Asch, ASE; Dr. Adolfo Chavez Mendoza, Instituto Nacional de Cardiología and Secretariat of Health; Yurika Manuel Valencia, CENAPRECE.*

# Maximize Your Giving AND Lessen Your Tax Burden

**D**o you have any investments in the stock market? Instead of selling highly appreciated securities and donating cash, consider gifting these securities to the ASE Foundation! Donating appreciated securities is an easy way to get more “bang for your buck,” plus you can take advantage of applicable tax incentives. Speak with your tax professional today to find out if this type of donation is suitable for you!



To donate appreciated securities you will need to complete a charitable gift transfer form that your brokerage firm can provide you. To complete the form, here is what you will need to know:

- **Receiving Institution Account Number:** 4182-1379
- **Account Registration:** ASE Education and Research Foundation
- **Name of Receiving Institution:** Charles Schwab & Company
- **DTC Number:** 0164

## ***A few important notes:***

- You must have owned the **stock for more than a year**. Otherwise, you only get to deduct the basis, not the current fair market value.
- The value of the contribution is the average of the high and low prices for publicly held stock on the day of transfer.
- There are some limits on the deductibility of gifts of appreciated property and you should consult with your tax advisor.

**Please contact** Sam Paglioni or Tom Foglia with Integer Wealth Advisors Group, LLC at 770-974-2787 or 215-643-6490 or [Foundation@ASEcho.org](mailto:Foundation@ASEcho.org) with any questions!



# Year End Giving Tips

**Keep it simple:** Having a hard time picking a campaign most aligned with your personal priorities? Unlike when investing in stock, diversification isn't as important a consideration when giving to ASEF. The simplest choice for maximum impact of your donation is to give to the "Area of Greatest Need." This allows the Foundation to allocate your gift to where it will make the most difference in 2020.

**Give wisely:** Be sure to confirm that the organization you are giving to is a qualified charity or else your donation will not be tax deductible. The ASE Foundation is a 501(c)(3) charitable organization, so your gift is tax deductible to the fullest extent of United States law.



**Explore employer gift matching programs:** Many companies offer gift matching programs that can increase – even double – the impact of your gift.

**Remember the deadline:** Donations are tax deductible in the year they are made. So if you want to deduct your charitable contributions on your 2019 tax return, you have until December 31st to make those donations. Online giving at [ASEFoundation.org/Donate](https://ASEFoundation.org/Donate) makes it easy to donate at the last minute.

# THANK YOU

**The ASE Foundation proudly recognizes and thanks these individuals for their leadership and support of the 2019 Annual Appeal. Every gift is meaningful. Every contribution makes a difference. Together, we will continue to make a world of difference.**

## 2019 ANNUAL APPEAL GIVING LEVELS

**Hero - \$1500+**

**Visionary - \$1000-\$1499**

**Champion - \$500-\$999**

**Patron - \$100-\$499**

**Friend - \$15-\$99**

## HERO INVESTORS

Ford Ballantyne III, MD  
Jose Banchs, MD, FASE\*  
Merri Bremer, EdD, RN, ACS, RDCS, FASE  
Benjamin Eidem, MD, FASE  
Edward Gill, MD, FASE\* - *In memory of Alice Gill.*  
Steven Goldstein, MD, FASE - *In memory of Pamela Chapman.*  
Rebecca Hahn, MD, FASE  
Judy Hung, MD, FASE  
Georgetanne Lammertin, MBA, RCS, RDCS, FASE  
Jonathan Lindner, MD, FASE  
Michael Main, MD, FASE  
Sunil Mankad, MD, FASE\*  
Randolph Martin, MD, FASE - *In honor of all as well as Richard Popp, MD, FASE.*  
Jae K. Oh, MD, FASE  
Michael Picard, MD, FASE  
Peter Rahko, MD, FASE  
Vera Rigolin, MD, FASE - *In honor of Northwestern Medicine Echo Lab Staff.*  
Geoffrey Rose, MD, FASE  
David Rubenson, MD, FASE - *In honor of Kathie Rubenson.*  
Marielle Scherrer-Crosbie, MD, PhD, FASE  
Samuel Siu, MD, FASE - *In honor of Jane Marshall, RDCS, (AE/PE), FASE.*  
Raymond Stainback, MD, FASE\* - *In honor of Madhav Swaminathan, MD, FASE.*  
Lissa Sugeng, MD, MPH, FASE - *In honor of Yale Sonographers.*  
Madhav Swaminathan, MD, FASE - *In honor of Joseph Mathew.*  
A. Jamil Tajik, MD, FASE

## VISIONARY INVESTORS

Enrique Garcia-Sayan, MD, FASE  
Joan Main, BS, RDCS, MBA, FASE\* - *In honor of Logan Harrison Durell.*  
Fletcher Miller Jr., MD, FASE  
Alina Nicoara, MD, FASE\*  
David Orsinelli, MD, FASE  
Maryellen Orsinelli, RN, RDCS, FASE  
Sabrina Phillips, MD  
Ritu Thamman, MD, FASE  
Kevin Wei, MD, FASE\*  
Neil Weissman, MD, FASE - *In honor of Team China.*  
William Zoghbi, MD, FASE

## CHAMPION INVESTORS

Bonita Anderson, M.APPL.SC, DMU, AMS, ACS, FASE  
Jayashri Aragam, MD, FASE  
Basant Arya, MD, FASE  
Frederick Cobey, MD, FASE  
Sidney Edelman, PhD  
Colleen Harrington, MD  
Rachel Hughes-Doichev, MD, FASE  
James Kirkpatrick, MD, FASE  
Karla Kurrelmeyer, MD, FASE  
Stephen Little, MD, FASE  
G. Burkhard Mackensen, MD, PhD, FASE  
Marti McCulloch, MBA, BS, RDCS, FASE  
Sherif Nagueh, MD, FASE  
Matthew Parker, MD, FASE  
Pravin Patil, MD, FASE  
Alan Pearlman, MD, FASE  
Douglas Shook, MD, FASE  
Nikolaos Skubas, MD, FASE\*  
Vincent Sorrell, MD, FASE - *In memory of Dr. M.E. (Bud) Sorrell.*  
Richard Stacey, MD, FASE  
William Stewart, MD, FASE  
Gregory Tatum, MD, FASE - *In honor of Team Kenya and Duke Pediatric Echo Team.*  
James Thomas, MD, FASE  
Andrea Van Hoever, MSGH - *In honor of Team Kenya.*  
Melissa Wasserman, RDCS, RCCS, FASE\*  
Susan Wiegers, MD, FASE  
David Wiener, MD, FASE

## PATRON INVESTORS

Theodore Abraham, MD, FASE  
David Adams, ACS, RCS, RDCS, FASE  
Karima Addetia, MD, FASE  
Nausheen Akhter, MD, FASE  
Carolyn Altman, MD, FASE  
Ashish Aneja, MD  
Federico Asch, MD, FASE  
Piers Barker, MD, FASE  
JoAnne Berge, RDCS, RVT  
Michelle Bierig, ACS, RCS, RDCS, FASE  
Kristen Billick, BS, ACS, RDCS (AE, PE), FASE  
Lori Blauwet, MD, FASE  
Paul Braum, BS, RDCS, RCS, RVT, RVS, ACS, FASE  
Brittany Byrd, RDCS, FASE - *In honor of Team Kenya.*  
Mohammed Chamsi-Pasha, MD, FASE  
Tiffany Chen, MD, FASE  
Meryl Cohen, MD, FASE  
Keith Collins, MS, RDCS, FASE  
Timothy Cordes, MD  
Mary Corretti, MD, FASE  
Stephanie Coulter, MD  
Nancy Cutler, MD, FASE - *In honor of Team China.*  
Melissa Daubert, MD, FASE - *In honor of Pam Douglas, MD, FASE.*  
Brian Davidson, MD, FASE  
Suzanne Davy-Snow, BSc, DMU  
Jeanne DeCara, MD, FASE  
Francesca Delling, MD, MPH  
Holly Diglio, RCS, FASE

Mary Alice Dilday\*  
Mary Donofrio, MD, FASE  
Daniel Drake, MD  
Ashley Duckett  
Michael Duggan, MD, FASE\*  
Jens Eichhorn, MD, PhD, FASE\* - *In honor of Geoffrey Rose, MD, FASE.*  
Sibel Enar, MD, FASE  
Gregory Ensing, MD, FASE  
Abimbola Faloye, MD  
Dali Fan, MD, PhD, FASE  
Harvey Feigenbaum, MD, FASE  
Maros Ferencik, MD, PhD, MCR  
Alan Finley, MD, FASE  
Craig Fleishman, MD, FASE  
Michael Foster, ACS, RCS, RCCS, RDCS, FASE\*  
Benjamin Freed, MD, FASE  
Julius Gardin, MD, FASE  
Bryon Gentile II, MD  
Yvonne Gilliland, MD, FASE  
Beverly Gorman, RDCS\*  
Robert Graff  
Frank Green  
Richard Grimm, DO, FASE  
Allison Hays, MD, FASE  
Stephen Heitner, MD, FASE  
Karen Helfinstine, ACS, RCS, RDCS, FASE\*  
Debra Herring, DMU  
Jeff Hill, BS, ACS, FASE - *In memory of Brian Haluska, PhD, MSC (HONS), MSC, RDCS, AMS, FASE.*  
McKenzie Hollon, MD, FASE  
Helene Houle, BA, RDCS, RVT, RDMS, FASE  
David Hsi, MD, FASE - *In honor of Rebecca Hahn, MD, FASE.*  
Lanqi Hua, ACS, APCA, RDCS (AE/PE/FE), FASE  
Farid Jadbabaie  
Renuka Jain, MD, FASE - *In honor of Aurora St. Luke's Echo Lab.*  
Rajesh Janardhanan, MD, MRCP, FASE  
Erin Jensen, RDCS, RVT  
Pei-Ni Jone, MD, FASE  
John Stewart Jones  
Bonnie Kane, BS, RDCS, FASE - *In honor of Vera Rigolin, MD, FASE.*  
Abigail Khan, MD  
Olga Kisilitsina  
Allan Klein, MD, FASE  
Theodore Kolias, MD, FASE  
Smadar Kort, MD, FASE  
Eric Kruse, BS, ACS, RDCS, RVT, FASE  
Wyman Lai, MD, MPH, MBA, FASE  
Bruce Landeck II, MD, FASE  
Roberto Lang, MD, FASE  
Howard Leong-Poi, MD, FASE  
Jennifer Liu, MD, FASE  
Juan Lopez-Mattei, MD, FASE  
Ying Hui Low, MD, FASE  
Jimmy Lu, MD, FASE  
George Lui, MD, FASE  
Judy Mangion, MD, FASE  
Jane Marshall, RDCS, FASE  
Michael Mastela, MSEE  
Richard Matiasz, MD

\*Denotes an ASE Foundation sustainer.



# THANK YOU

**The ASE Foundation proudly recognizes and thanks these individuals for their leadership and support of the 2019 Annual Appeal. Every gift is meaningful. Every contribution makes a difference. Together, we will continue to make a world of difference.**

## PATRON INVESTORS

### (Continued)

Susan Mayer, MD, FASE  
Patrick McCarthy, MD  
Carlene McClanahan, RDCCS, FASE  
Elizabeth McIlwain, MHS, ACS, RCS, FASE - *In honor of E. Kenneth Kerut.*  
Jennifer Mercandetti, BS, RDCCS (AE/PE), ACS, FASE  
Ashley Mielcarek, RDCCS  
Issam Mikati, MD, FASE  
Douglas Misch\*  
Carol Mitchell, PhD, RDMS, RDCCS, RVT, RT(R), ACS, FASE  
Anita Moon-Grady, MD, FASE  
Victor Mor-Avi, PhD, FASE  
Samira Morhy, MD, FASE  
Sharon Mulvagh, MD, FASE, FRCP(C)  
Raymond Musarra, RDCCS, RCS, FASE\*  
Akhil Narang, MD  
Gillian Nesbitt, MD, FASE  
Vuyisile Nkomo, MD, FASE  
Jamel Ortoleva, MD  
Donald Oxorn, MD  
Sheela Pai Cole, MD, FASE  
Richard Palma, BS, RDCCS, RCS, ACS, FSDMS, FASE  
Margaret M. Park, BS, ACS, RDCCS, RVT, FASE  
Anitha Parthiban, MD, FASE  
Amit Patel, MD  
Bharatbhushan Patel, RDCCS, RVS, RDMS, FASE  
Ayan Patel, MD, FASE  
Andy Pellett, PhD, RDCCS, FASE  
Amanda Perez, DVM  
Shabnam Peyvandi, MD, FASE  
Dermot Phelan, MD, PhD, FASE  
Juan Carlos Plana, MD, FASE  
Athena Poppas, MD, FASE  
Suzanne Poston, BS, RDCCS, RVS, RCS, RDCCS, CCT, FASE  
Jyothy Puthumana, MD, FASE  
Sasan Raissi, MD  
Eileen Richardot, RCS, RDCCS, FASE  
Marilyn Riley, RDCCS, FASE  
Steven Romero, MD, FASE  
Judy Rosenbloom, RDCCS, FASE  
Thomas Ryan, MD, FASE  
Vandana Sachdev, MD, FASE  
Ritu Sachdeva, MBBS, FASE  
Lucy Safi, DO, FASE  
Retu Saxena, MD  
Nelson Schiller, MD, FASE  
Franklin Schneider, MD, FASE  
Courtney Scott, RDCCS, FASE  
Jeffrey Scott, DO  
Shimoli Shah, MD, FASE

Sanjiv Shah, MD, FASE  
Sangeeta Shah, MD, FASE - *In honor of Neil Weissman, MD, FASE and Elizabeth McIlwain, MHS, ACS, RCS, FASE.*  
Elaine Shea, ACS, RCS, RDCCS, FASE  
Robert Silverberg, MD  
Chittur Sivaram, MD, FASE  
Shubhika Srivastava, MD, FASE  
Katie Jo Stauffer, BS, RDCCS (AE, PE, FE), FASE  
Jordan Strom, MD, MSc, FASE  
Mark Taylor, MD, FASE  
Kelly Thorson, ACS, RDCCS, RDCCS, FASE  
Wendy Tsang, MD  
Matt Umland, ACS, RDCCS, FASE  
Patricia Vassallo, MD, FASE  
George Vellanikaran, MD  
Flordeliza Villanueva, MD  
Claudia von Chossy  
Lin Wang, MD, MS, FASE  
Ginger Warner, RDCCS, RDMS  
Cathy West, MSc, AMS, FASE  
Robin Wiegerink, MNPL - *In honor of Debbie Meyer.*  
Kaoe Williams  
Tom Wolk  
Tina Yost, ACS, RDCCS, RVT, FASE  
Luciana Young, MD, FACC, FASE  
Qiong Zhao, MD, PhD, FASE  
Karen Zimmerman, BS, ACS, RDCCS (AE, PE), RVT, FASE

Kathryn Glas, MD, FASE  
John Gottdiener, MD, FASE  
Robert Iwanochko, MD  
Ankit Jain, MBBS, FASE  
Alan Jansujwicz, MD  
Randall Joe, MD  
Rachel Kaplan, RDCCS - *In honor of Lissa Sugeng, MD, MPH, FASE.*  
Kelly Kasir, RDCCS, RCS, FASE  
William Katz, MD, FASE - *In memory of Dr. Fred Crock.*  
Omar Khalique, MD, FASE - *In honor of Rebecca Hahn, MD, FASE.*  
Pedro Kourtesis, MD  
Attila Kovacs, MD, PhD, FASE  
Tracy Lawrence, MD, FASE - *In honor of Leonard Ginzton, MD.*  
Bryana Levitan, RDCCS, FASE  
Eric Lineburger, MSc  
Sheldon Litwin, MD, FASE  
Timothy Maus, MD, FASE  
Debbie Meyer\*  
Tu Nguyen  
Nobutaka Noto, MD, PhD, FASE  
Andrew Nowak, MD  
Charles Nyman, MBBS  
Robert Olszewski, MD, PhD  
Gary Oppenheim  
Marie Owens, RDCCS, RVT  
Ratnasari Padang, MBBS (Hons1), PhD, FRACP, FASE  
Brijesh Patel  
Brian Pearson, RDCCS  
Robert Percy  
Sue Phillip, RCS, FASE  
Andie Piddington\*  
Gregg Pressman, MD, FASE  
Jay Pruetz, MD  
Karl Richardson  
L. Leonardo Rodriguez, MD, FASE  
Thiriveni Sanagala, MD, FASE  
Cynthia Taub, MD, FASE - *In honor of Team China 2019.*  
Dwitiya Thomas  
Thomas Van Houten, MPH, ACS, RDCCS, FASE  
Lauren Wang  
Arthur Weyman, MD, FASE  
Gillian Whalley, PhD, DMU, FASE  
Malissa Wood, MD, FASE  
Robert Zaloom, MD  
Suzana Zorca, MD

\*Denotes an ASE Foundation sustainer.

## FRIEND INVESTORS

Zoheir Abdelbaki  
Jose Assad-Morell, MD  
Dragos Balf, MD  
Daniel Bourque, MS, RCS, FASE  
Geneva Boyle, RDCCS  
Allyson Boyle, BS, RDCCS, FASE  
Larry Breeding, MD  
Sujatha Buddhé, MD, FASE  
Tracie Calson, RCS  
Charles Campbell, MD  
J. Jane Cao, MD  
Mary Carmody - *In honor of Kim Baxter.*  
Frederick Conlin, MD, FASE  
Bruno Cotter, MD  
Ashlee Davis, BS, ACS, RDCCS, FASE  
Krassimir Denchev, MD  
Richard Devereux, MD  
Allen Dobromislov  
Esam Elbarasi, MD  
Luiz Ferlante, MD  
Daniel Forsha, MD, MCS, FASE  
Rita France, RDCCS, RDMS, RT, FASE  
Raymond Garcia, RDCCS, FASE

## ASE FOUNDATION MISSION STATEMENT:

The ASE Foundation is ASE's charitable arm, helping to assure the viability and visibility of cardiovascular ultrasound.

As a 501(c)(3) nonprofit organization, contributions made to the ASE Foundation are U.S. tax deductible to the fullest extent of the law.

**This list reflects all donations of \$50 or more made to the 2019 Annual Appeal between 1/1/2019 and 10/31/2019.**

We strive to be accurate and complete, but errors occasionally occur. Your assistance in bringing any inaccuracies to our attention is greatly appreciated.