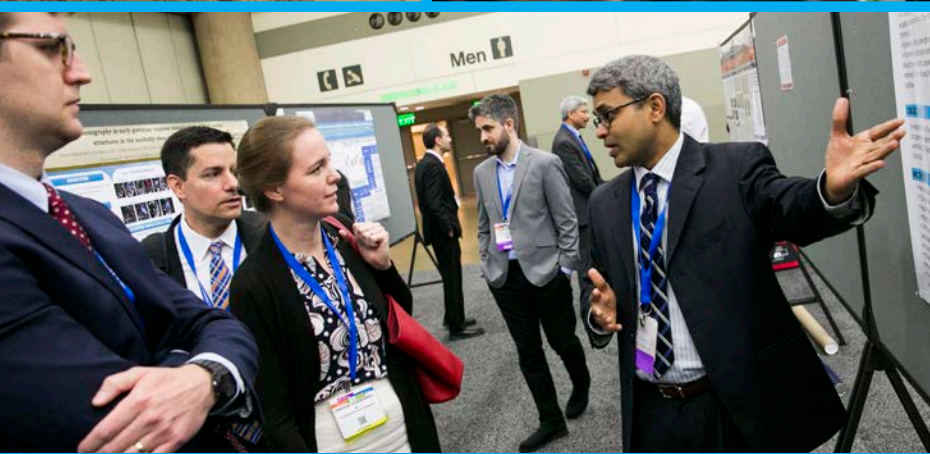




ASE Foundation

NEWSLETTER

SUMMER 2017



IN THIS ISSUE:

Letter from the Chair	2
Meet the Committee	3
News & Events	4
Biggest Hearts	5
Cardiovascular Challenge	6
Chain Reaction Challenge – A Victory For All!	7
<i>Images from the Heart</i> Photo Exhibit	8
8th Annual Research Awards Gala	9
Your Donations In Action: 2017 Scholarship & Award Winners	11
ASE Foundation Supports the Progress and Future of Echocardiography	15
Thank you to our 2017 Annual Appeal Investors	16

A Time for Reflection and a Look Ahead

Jose Banchs, MD, FASE, 2017-2018 ASE Foundation Annual Appeal Committee Chairman



When I began my term as chair of the Annual Appeal Committee last summer, part of my vision was to grow the Foundation's overall visibility and significance in the Society. As I reflect on the past year, I believe we have made great strides towards accomplishing this. There is no better example than my personal experience in Baltimore and the endless follow up communications with many of our members interested in joining our committee and/or participating in the many upcoming activities we have planned. The enthusiasm for the Foundation is becoming contagious.

Supporters of the Foundation continue to prove they are the heart and soul of ASEF! In just a few days at our ASE Scientific Sessions in Baltimore this past June, the Foundation received nearly \$11,000 in direct contributions. Our most sincere thank you to everyone who stopped by the Foundation

Supporters of the Foundation continue to prove they are the heart and soul of ASEF!

tracking your steps for the Cardiovascular Challenge or helping create a Chain Reaction, the Foundation team enjoyed meeting you and discussing all the wonderful initiatives made possible through your donations.

Speaking of initiatives, thanks to your support, the Foundation was able to provide **58 travel grants** to sonographers, members of ASE's four specialty councils, and research abstract presenters to attend the Scientific Sessions. By fostering the next generation of cardiovascular ultrasound professionals, the Foundation is ensuring that echocardiography continues to play a prominent role in the future of healthcare.

The 2017 *Images from the Heart* curated photo exhibition was a must-see at the Scientific Sessions.

booth! Your participation further increases awareness of the Annual Appeal Committee's goals for the Foundation. Whether you were making a donation,

The showcase was displayed on large poster boards near the Foundation Booth, and the 2016 collection was also on site for viewing. These breathtaking images, taken by ASE members while participating in humanitarian events around the world, were available to take home in exchange for a donation to the Foundation in the photographer's name. By the end of the conference, the exhibition had prompted over \$1,700 in donations! See page 8 for a sample of the photos and stories submitted this year.

The Hippodrome Theatre was the perfect venue for our 8th Annual Research Awards Gala, where we honored the 2017 Award Recipients and raised needed funds for research. Your generosity provided **over \$75,000** to echo research, continuing to make the Research Awards Gala our premier fundraising event of the year. A full list of the award winners and the evening's supporters can be found on page 9.

We are past the halfway point of our fundraising year and because of your generous giving, we have raised over \$134,000 towards our \$250,000 Annual Appeal Goal! Summer may be winding down, but the ASE Foundation is ramping up! This fall the Foundation will send volunteer teams to **Xi'an, China** and **Hanoi, Vietnam** to participate in global humanitarian missions. The teams, made up of physicians and sonographers, will provide cardiac care in areas of need and engage in educational lectures and training for local clinicians.

The scope and success of the Foundation's initiatives is completely dependent upon donor giving. If you have considered donating, but don't know where to start, please reach out to the Foundation at foundation@asecho.org or call Mary Carmody, the Foundation Specialist at 919-861-5574 ext. 7169. There are many options available to you, from stock transfers, monthly credit card debits, and honoraria donations, to a one-time online donation. Let us take care of the paperwork for you. Together we can make a world of difference.



 **ASE Foundation** ANNUAL APPEAL

Making a WORLD of Difference

Meet the Committee

Meet the ASE Foundation's 2017 – 2018 ANNUAL APPEAL COMMITTEE

Thank you for joining the team to fundraise and help ensure the viability and visibility of cardiovascular ultrasound!



Chair: Jose Banchs, MD, FASE
*University of Texas, MD Anderson
Cancer Center*



Co-Chair: David Rubenson, MD, FASE
Scripps Clinic Medical Group



Basant Arya, MD, FASE
Baylor College of Medicine



Peter Rahko, MD, FASE
University of Wisconsin Hospital



Allan Klein, MD, FASE
Cleveland Clinic



Thomas Ryan, MD, FASE
The Ohio State University



Georgeanne Lammertin, MBA, RCS, RDCS
FASE, University of Utah Healthcare



Douglas Shook, MD, FASE
Brigham and Women's Hospital



Elizabeth McIlwain, MHS, RCS, FASE
West Jefferson Medical Center/LCMC Health



Vincent Sorrell, MD, FASE
University of Kentucky



Navin Nanda, MD
University of Alabama at Birmingham



Jessica Spellman, MD
Columbia University Medical Center



Bharatbushan Patel, RDCS, RVS, RDMS, FASE
Hoboken University Medical Center



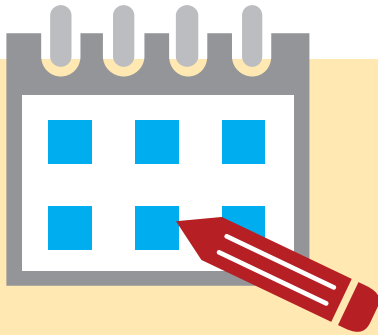
Lissa Sugeng, MD, MPH, FASE
Yale University



Rachel Quang, RDCS
Midcoast Hospital



Gregory Tatum, MD, FASE
Duke University Medical Center



UPCOMING EVENTS

2017

September – ASEF Global Health Event in Xi'an, China

October – ASEF Global Health Event in Hanoi, Vietnam

November 28 – Giving Tuesday

December 31 – Last day to donate to the 2017 Annual Appeal

2018

March 20 – Spring Giving Day

June 24 – 9th Annual Research Awards Gala

ASE MEMBERSHIP DUES RENEWAL

What's #YourPriority?

Keep an eye out for your ASE Membership dues renewal in the mail! ASE will begin mailing these in late September. Your invoice includes a suggested \$15 donation to the ASE Foundation Annual Appeal. We encourage you to accept this donation when renewing your membership. **If every member donated \$15, we'd raise over \$200,000!** *Donations are deductible for U.S. tax purposes.*

International Training

Guideline Dissemination

Research Investigator Support

Humanitarian Missions

Travel Grants

Your Donations Directly Fund #YourPriority

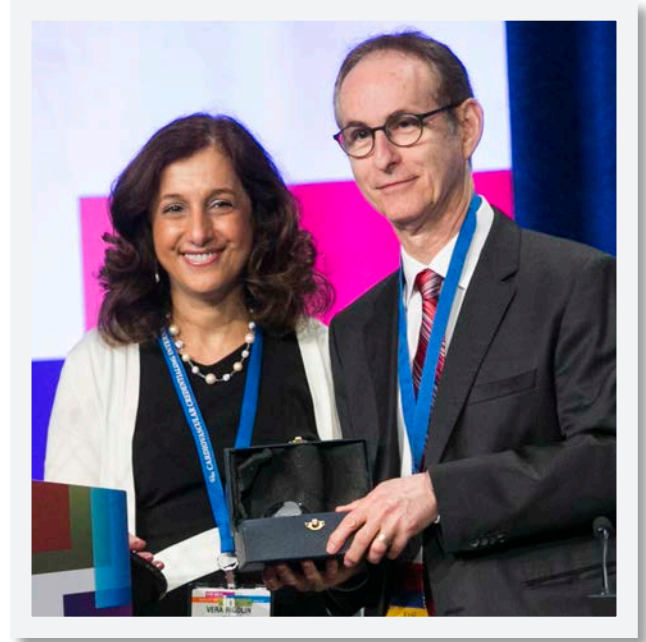
Did you know that when you give to the ASE Foundation, you have the option to direct your gift to projects most aligned with your personal priorities? You do! Visit ASEFoundation.org to learn about a variety of ways to give, including eight different initiatives where your donation can be applied.

What's #YourPriority? Show us with your targeted renewal donation! *Donations are deductible for U.S. tax purposes.*

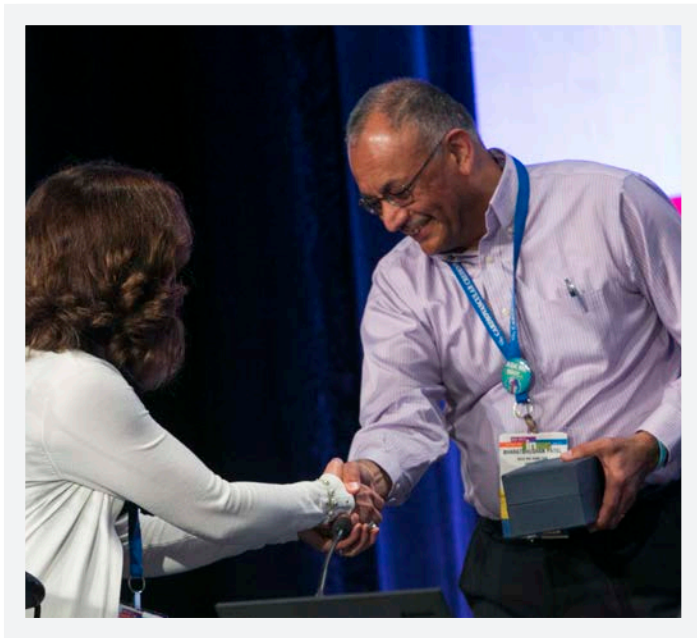
Biggest Heart Awards

At the 2017 Scientific Sessions,

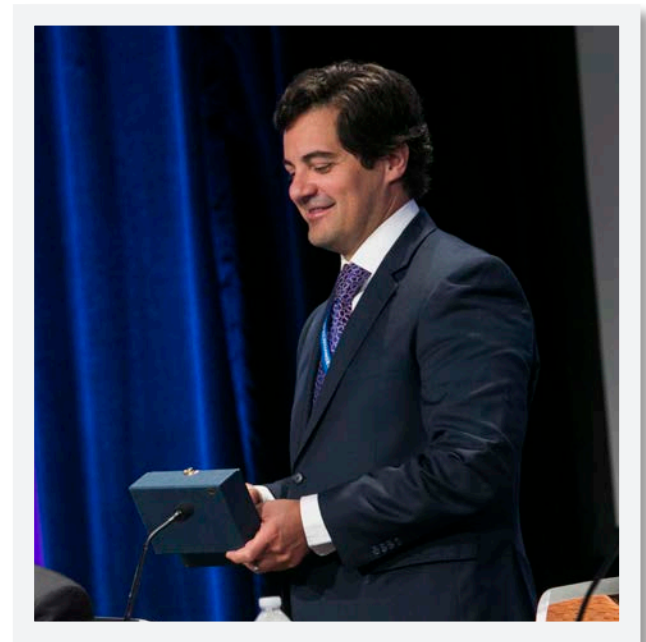
the ASE Foundation recognized three exceptional Annual Appeal committee members for their achievements and generosity.



Allan L. Klein, MD, FASE received the 2016 award for Most Generous Donor



Bharatbhushan Patel, RDCS, RVS, RDMS, FASE received the 2016 award for Top Fundraiser



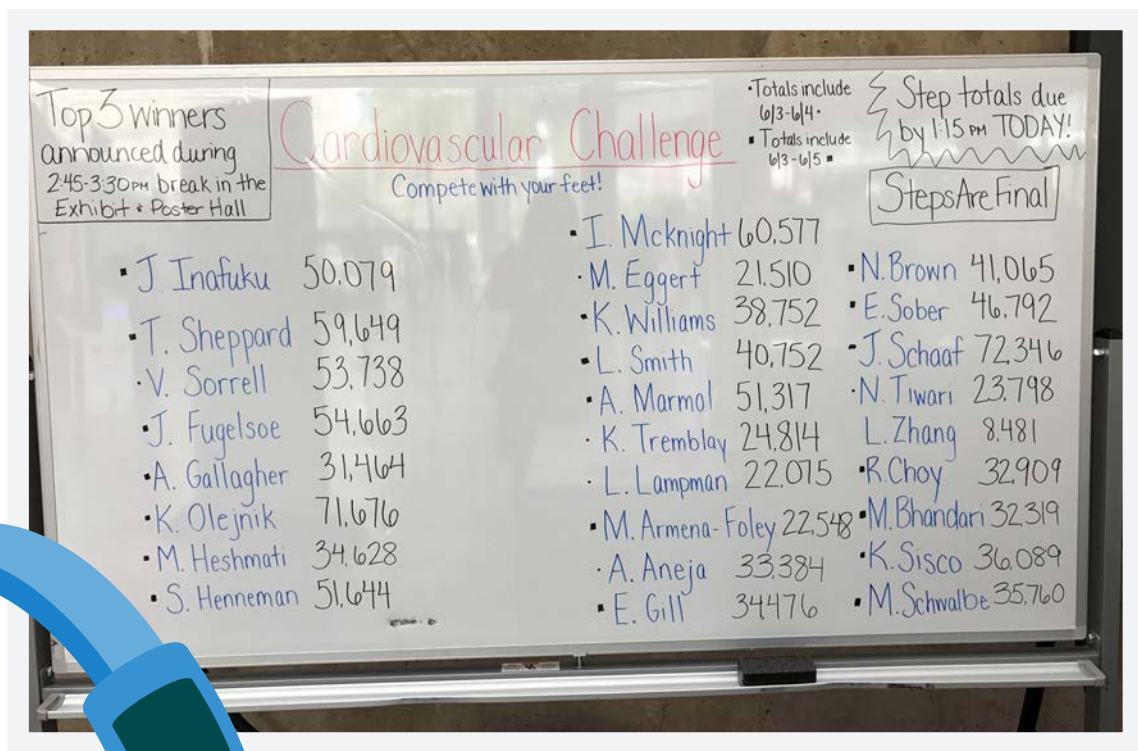
Jose Banchs, MD, FASE received the 2016 award for Top Solicitor of Donors

Cardiovascular Challenge

Physical activity can dramatically lower an individual's risk of cardiovascular disease, improve mental health, and lower the risk of obesity-related diseases. The ASE Foundation highlighted physical activity at this summer's Scientific Sessions in Baltimore, MD by hosting a "pedometer challenge" sponsored by Studycast®. The challenge encouraged attendees to visit key areas around the convention center that displayed step targets. Twenty-seven attendees competed in the challenge, with each participant using his or her own tracking device (whether a pedometer, wrist band or other application) to record their steps taken between June 3rd – June 5th. Each day the participants recorded their steps at the ASE Foundation booth, where the totals were displayed so participants could keep track of the competition.

The ASE Foundation would like to congratulate the top three steppers of this year's Cardiovascular Challenge! The winner, **Jennifer Schaaf**, took first place with 72,346 steps and received a free hotel night at one of the ASE headquarter hotels. **Kathy Olejnik** had the second highest step total with 71,676 steps and won a \$100 Amazon gift card, and **Tammy Sheppard** took third place with 59,649 steps and stepped away with a limited-edition ASEF hat. Way to get those feet moving!

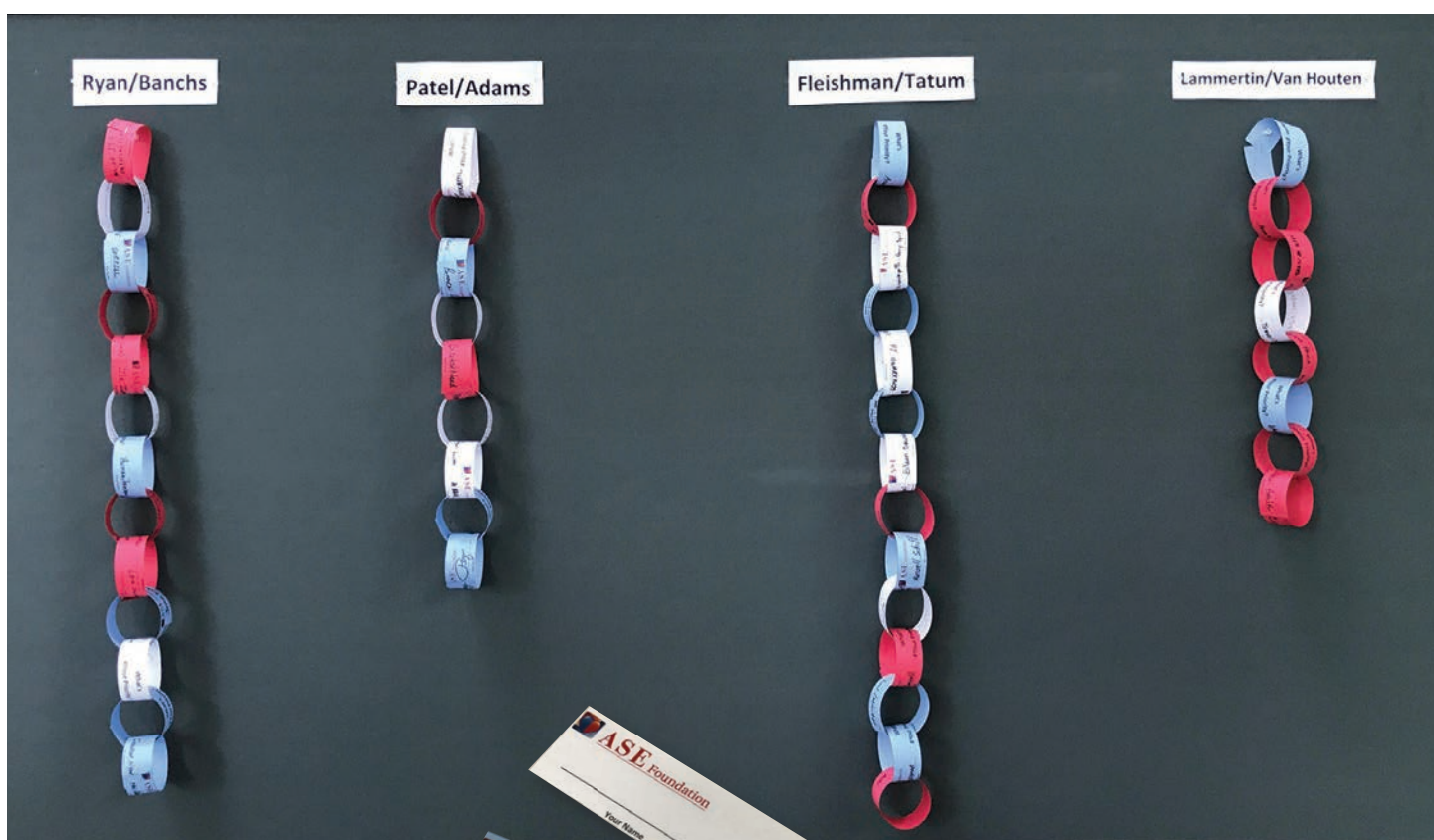
Thank you to everyone who participated in the step competition, and special thanks to our sponsor **Studycast®**, for making this a great success! The ASE Foundation plans to host this competition again, so if you did not participate this year, plan to join us next year when the Scientific Sessions heads to Nashville, TN!



Chain Reaction Challenge – A Victory For All!

The ASE Foundation held its first chain reaction donation challenge at the Scientific Sessions in Baltimore. Four teams, comprised of two captains each, competed against each other by securing donations to their team's chain. Donors wrote their names on paper chain links and filled in #YourPriority with the campaign to which they allocated their donations. The chains were linked and kept on display at the ASE Foundation booth, where they sparked a lot of conversation and competition, especially as they

started to grow! At the end of the challenge, the winning team was captained by **Dr. Jose Banchs** and **Dr. Thomas Ryan** with \$3,790 in donations. The ASE Foundation thanks all the team captains who volunteered for this challenge: **Drs. Craig Fleishman** and **Gregory Tatum**, **Bharatbhusan Patel** and **David Adams**, and **Georgeanne Lammertin** and **Thomas Van Houten**. We also want to thank ALL the donors who helped us start a chain reaction! Thank you for showing us #YourPriority and inspiring others to do the same!



Images from the Heart Photo Exhibit

On display at the Scientific Sessions in Baltimore was a special juried showcase of photographs taken by ASE members while they travelled across the world to participate in various medically-related humanitarian events. There is no doubt that our members excel at taking images of the heart; this was an opportunity to share the images they've taken from the heart. An outside juror selected a total of 25 photographs from the numerous submissions received to be included in the 2017 collection, and an additional 20

photos from the 2016 collection were on site as well. These exceptional images drew the attention of everyone who passed the exhibit. Most were available to take home with a donation to the ASE Foundation. By the end of Scientific Sessions, nine photos from the 2016 collection and thirteen from the 2017 collection found new homes, and the ASE Foundation received over \$1,700 in donations. We can't wait to see more wonderful images for next year's exhibit!



Photos below, clockwise from top left: "Smiles All Around," Richard Allwood, taken in China; "Heading to School," Barry Canaday, taken in India; photo display boards in Baltimore; "La Santera," Federico Asch, taken in Cuba.



8th Annual Research Awards Gala

The red carpet was rolled out and the cameras flashed as guests arrived at the 8th Annual Research Awards Gala! The carefully restored Hippodrome Theatre set the stage for an unforgettable evening. Guests mingled on the stage during cocktail hour and returned after dinner for dancing and celebration. Speaking of celebrating, **thanks to your**

support, the ASE Foundation raised over \$75,000 during the 2017 Research Awards Gala, allowing ASEF to provide researchers with much-needed funds to continue the growth and advancement of our field. We are grateful also to Drs. Allan and Jared Klein, who entertained the Gala participants with an energetic “video rap” about the Foundation.

ASE'S 2017 STARS OF THE EVENING

Council on Pediatric & Congenital Heart Disease Founders Award

Jean-Claude Fouron, MD, FRCP(c), CM, OQ, Emeritus Professor
University of Montreal, Montreal, QC, Canada

Meritorious Service Award

Alan S. Pearlman, MD, FASE
University of Washington Medical Center, Seattle, WA

Outstanding Achievement in Perioperative Echocardiography Award

Robert M. Savage, MD
McLeod Healthcare System, Florence, SC

Physician Lifetime Achievement Award

William J. Stewart, MD, FASE
Cleveland Clinic, Cleveland, OH

Richard Popp Excellence in Teaching Award

Muhammed Saric, MD, PhD, FASE
New York University Medical Center, New York, NY

Sonographer Lifetime Achievement Award

Margaret M. Park, BS, ACS, RDCS, RVT, FASE
Cleveland Clinic, Cleveland, OH

ASE'S 2017 WALK OF FAME

National Board of Echocardiography (NBE)
Intersocietal Accreditation Commission (IAC)

Advocate Level Table Supporters

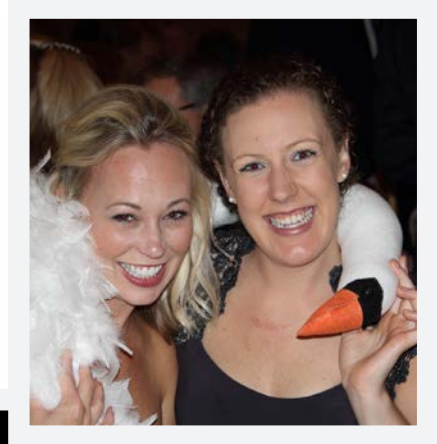
Elsevier
National Board of Echocardiography (NBE)

Benefactor Level Table Captains

Carolyn Altman, MD, FASE for *Texas Children's Hospital*
Federico Asch, MD, FASE & Neil Weissman, MD, FASE,
Co-Captains for MedStar Research Institute
Jose Banchs, MD, FASE & Edward Gill, MD, FASE,
Co-Captains
Richard Grimm, DO, FASE
Rebecca Hahn, MD, FASE
Sanjiv Kaul, MD, FASE for *Knight Cardiovascular Institute*
Allan Klein, MD, FASE for *McLeod Regional Medical Center*
Vera Rigolin, MD, FASE
Geoffrey Rose, MD, FASE
Raymond Stainback, MD, FASE
Lissa Sugeng, MD, FASE



8th Annual Research Awards Gala



Your Donations in Action: Congratulations to the 2017 Scholarship and Grant Recipients

The following Awards and Grants are supported by the ASE Education and Research Foundation in the interest of fostering the next generation of cardiovascular ultrasound professionals. They were awarded at the ASE 28th Annual Scientific Sessions in Baltimore, MD.

2017 KALMANSON LECTURE



From left to right: Bogdan A. Popescu, MD, PhD, FASE, Jose Banchs, MD, FASE

Bogdan A. Popescu, MD, PhD, FASE, from the University of Medicine and Pharmacy in Bucharest, Romania, was the 2017 Kalmanson Lecturer. Established in memory of Professor Daniel Kalmanson, a pioneer in the use of Doppler echocardiography, and funded through a grant from the International Cardiac Doppler Society (ICDS), this annual lectureship provides a forum for honoring worthy investigators while promoting research and education in cardiovascular Doppler ultrasound.

2017 SONOGRAPHER INVESTIGATOR'S AWARD COMPETITION



From left to right: Winner Leah Wright, and Finalists Courtney Cassidy, Gilda Kadiu, and Ling Li.

Created to highlight sonographer-led research, this annual competition recognizes non-physicians who served as the primary investigators on their projects of original work.

WINNER:

Leah M. Wright, BsC, DMU-Cardiac, University of Tasmania, Hobart, Australia

FINALISTS:

Courtney J. Cassidy, RDCS, Children's Hospital Colorado, Aurora, CO

Ling Li, RDMS, University of Nebraska Medical Center, Omaha, NE

Gilda Kadiu, RDCS, Children's Hospital of Michigan, Detroit, MI

2017 ARTHUR E. WEYMAN YOUNG INVESTIGATOR'S AWARD COMPETITION



From left to right: Finalists Jang-Won Son, Darae Kim, Geraldine Ong, and Winner Federico Moccetti.

Created to highlight the best science submitted to the Scientific Sessions, this annual competition is supported by the National Board of Echocardiography (NBE) in honor of its first president, Arthur E. Weyman, MD, FASE.

WINNER:

Federico Moccetti, MD, Oregon Health & Science University, Portland, OR

FINALISTS:

Geraldine Ong, MD, Cardiovascular Research Foundation, New York, NY

Darae Kim, MD, Severance Cardiovascular Hospital, Seoul, South Korea

Jang-Won Son, MD, PhD, Yeungnam University Medical Center, Daegu, South Korea

2017 TOMTEC INNOVATOR RESEARCH TRAVEL GRANT



From left to right: Bernhard Mumm from TOMTEC, Dr. Jose Banchs, and Dr. Akhil Narang.

Akhil Narang, MD, from The University of Chicago in Chicago, IL was the recipient of the 2017 TOMTEC Innovator Research Travel Grant. Supported by a grant to the ASE Foundation from TOMTEC Imaging Systems, this annual award is given to assist a promising young researcher presenting his/her work at the ASE Annual Scientific Sessions.

Your Donations in Action: Congratulations to the 2017 Scholarship and Grant Recipients

2017 ASE FOUNDATION TOP 25



Front row left to right: Sudarat Satitthummanid, Marija Vukicevic, Amara Majeed, Prabhakaran Gopalakrishnan, Antonino Di Franco, Shun Nishino, Allen J. Weiss, Alaa M. Omar. Back row left to right: Renzo JC Calderón-Anyosa, Yirong Zhou, Diego Medvedofsky, Jeremy Stone, David Elison, Baljash Cheema, Tiffany Mao, Wadi Mawad, Seunghyun Choi. Not pictured: Shae Anderson, Sassan Hashemi, Brandon Helfield, Nobuyuki Kagiya, Thomas S. Metkus, Prashant Minocha, Rupesh Ranjan, Satoshi Yamaguchi

A special group of investigators were recognized for the scientific merit of their research projects and are each awarded a \$1,000 travel grant to attend the Scientific Sessions.

Shae Anderson, MD, Emory University School of Medicine, Children's Healthcare of Atlanta, Sibley Heart Center Cardiology, Atlanta, GA

Renzo JC Calderon-Anyosa, MD, Children's Hospital of Philadelphia, Philadelphia, PA

Baljash Cheema, MD, Northwestern University Feinberg School of Medicine, McGaw Medical Center, Chicago, IL

Seunghyun Choi, PhD, University of Ulsan College of Medicine, Asan Medical Center, Seoul, South Korea

Antonino Di Franco, MD, Weill Cornell Medical College, New York, NY

David Elison, MD, University of Washington, Seattle, WA
Prabhakaran Gopalakrishnan, MD, Aultman Hospital, North Canton, OH

Sassan Hashemi, MD, Children's Healthcare of Atlanta, Atlanta, GA

Brandon Helfield, PhD, University of Pittsburgh, Pittsburgh, PA

Nobuyuki Kagiya, MD, University of Pittsburgh, Pittsburgh, PA

Amara Majeed, MD, Eastern Virginia Medical School, Norfolk, VA

Tiffany Mao, MD, Saint Luke's Mid America Heart Institute, Kansas City, MO

Wadi Mawad, MD, The Hospital for Sick Children, Toronto, ON, Canada

Diego Medvedofsky, MD, University of Chicago, Chicago, IL

Thomas S. Metkus, MD, Johns Hopkins Hospital, Baltimore, MD

Prashant Minocha, MD, University of Miami/ Jackson Memorial Hospital, Miami, FL

Shun Nishino, MD, Miyazaki Medical Association Hospital, Miyazaki, Japan

Alaa M. Omar, MD, Icahn School of Medicine at Mount Sinai, New York, NY

Rupesh Ranjan, MD, Albert Einstein Medical Center, Philadelphia, PA

Sudarat Satitthummanid, MD, Massachusetts General Hospital, Boston, MA and Chulalongkorn University and Cardiac Center, King Chulalongkorn Memorial Hospital, Bangkok, Thailand

Jeremy Stone, MD, University of Chicago, Chicago, IL

Marija Vukicevic, PhD, Methodist Hospital, Houston, TX

Allen J. Weiss, DO, Mount Sinai St. Lukes-Roosevelt Hospital Center, New York, NY

Satoshi Yamaguchi, MD, Heart Institute, Cedars-Sinai Medical Center, Los Angeles, CA

Yirong Zhou, MD, Wright State University, Dayton, OH

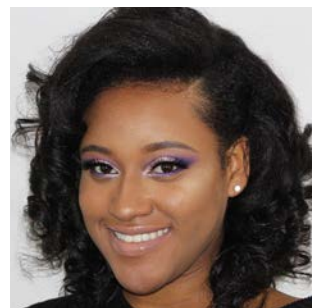
2017 FEIGENBAUM CARDIOVASCULAR SONOGRAPHER STUDENT TRAVEL GRANT



Katelyn Fortier from The Hoffman Heart & Vascular Institute School of Cardiac Ultrasound in Hartford, CT was the recipient of the 2017 Feigenbaum Cardiovascular Sonographer Student Travel Grant. Supported by a grant to the ASE Foundation from Elsevier Inc. to honor Dr. Harvey Feigenbaum's commitment and 20-year

tenure as Editor-In-Chief of the *Journal of the American Society of Echocardiography* (JASE), this award is presented to a sonographer student enrolled in a CAAHEP accredited cardiac ultrasound program.

2017 ULTRA ECHO, LTD. CARDIOVASCULAR SONOGRAPHER STUDENT TRAVEL GRANT



Shamichael Huntsberry from The Louisiana State University Health Sciences Center in New Orleans, LA was the recipient of the 2017 UltraEcho, LTD. Cardiovascular Sonographer Student Travel Grant.

Supported by a grant to the ASE Foundation, this award is presented to a sonographer

student enrolled in a CAAHEP accredited cardiac ultrasound program.

Your Donations in Action: Congratulations to the 2017 Scholarship and Grant Recipients

2017 ALAN D. WAGGONER STUDENT SCHOLARSHIP AWARDS



Front row left to right: Lyndi Foreman, Lin Zhu, Michelle McMenemy, Erika Mall, Heather Harvey, Anne Reiner. Back row left to right: Heather Dreaher, Angelica Petrisis, Katie Bergevin, Brandon Mayes, Stacey Brinkerhoff, Kristy Ricca, Allison Huver. Not pictured: Debra Courtney, George Platt, Autumn Ridlen, Rebecca Warren.

The Alan D. Waggoner Student Scholarship program was established in 2001 in recognition of Mr. Waggoner's professional achievements and service to ASE. Funding from the ASE Foundation provides a limited number of \$1,000 scholarship awards for students enrolled in a cardiac ultrasound program accredited by the Commission on Accreditation of Allied Health Education Programs (CAAHEP) in the United States or by an equivalent Canadian or external ultrasound program.

Katie Bergevin, Bellevue College DUTEC Program, Bellevue, WA

Stacey Brinkerhoff, Seattle University Diagnostic Ultrasound Program, Seattle, WA

Debra Courtney, Sentara College of Health Sciences CVT Program, Chesapeake, VA

Heather Dreaher, Hoffman Heart & Vascular Inst. School of Cardiac Ultrasound, Hartford, CT

Lyndi Foreman, LSU Health Sciences Center Cardiovascular Sonography Program, New Orleans, LA

Heather Harvey, Alvin Community College DMS Program, Alvin, TX

Allison Huver, Mayo School of Health Sciences Echocardiography Program, Rochester, MN

Erika Mall, South Hills School of Business & Technology DMS Program, State College, PA

Michelle McMenemy, Molloy College CVT Program, Rockville Centre, NY

Brandon Mayes, Johns Hopkins Hospital School of Cardiac Sonography, Baltimore, MD

Angelica Petrisis, Hoffman Heart & Vascular Inst. School of Cardiac Ultrasound, Hartford, CT

George Platt, University of Arkansas for Medical Sciences DMS Program, Little Rock, AR

Anne Reiner, Sentara College of Health Sciences CVT Program, Chesapeake, VA

Kristy Ricca, Clemson CV Imaging Leadership Program, Greenville, SC

Autumn Ridlen, John A. Logan College Cardiac DMS Program, Carterville, IL

Rebecca Warren, Bellevue College DUTEC Program, Bellevue, WA

Lin Zhu, Lackawanna College Cardiac Sonography Program, Scranton, PA

2017 ADAMS GLOBAL SERVICE AWARD



From left to right: David Adams and Yan Wang.

Yan Wang, RDCS, FASE, from the Children's Hospital of Philadelphia in Philadelphia, PA, was the recipient of the inaugural Adams Global Service Award. New this year, this \$1,500 travel grant award will be presented on an annual basis to one sonographer mission volunteer, in honor of David B. Adams, ACS, RCS, RDCS, FASE, previously of Duke University Medical Center, Durham, NC. Mr. Adams has contributed to the success of the ASEF humanitarian missions with his international mission experience, clinical skills, and leadership abilities. In September 2017, Yan Wang will participate in the ASEF training and humanitarian mission in China.

Your Donations in Action: Congratulations to the 2017 Scholarship and Grant Recipients

2017 KATANICK SCHOLARSHIP AWARD



From left to right: Marjan Miri, Scientific Sessions Program Chair Dr. Geoffrey Rose, and Sandy Katanick.

Marjan Miri from the Grossmont Community College in El Cajon, CA was the recipient of the 2017 Katanick Scholarship Award. New this year, this award was named to honor the legacy of Sandy Katanick, RN, RVT, CAE, who retired as CEO of the Intersocietal Accreditation Commission after more than 25 years of service to the field. This award includes a \$1,000 student scholarship for the highest ranking student sonographer candidate nominated for ASEF scholarship awards and up to \$500 in travel reimbursement to attend the ASE Scientific Sessions.

2017 COUNCIL TRAVEL GRANT AWARDS

The ASE Foundation sponsors Council Travel Grant Awards to fellows, trainees, and sonographers to fund their attendance at the Scientific Sessions. These travel grants are part of an ongoing effort by the Foundation, with the assistance of the Council Steering Committees, to encourage trainees in cardiovascular specialties to focus on the respective echocardiography sub-specialty. In addition, the Council Steering Committees hope to provide interested fellows with a deeper understanding of the imaging field and facilitate the development of meaningful mentoring opportunities for trainees with established imaging faculty.

Council on Pediatric and Congenital Heart Disease Travel Grant Award Recipients:

Jamie Harrington, MD, Columbia University Medical Center, New York, NY

Adam Christopher, MD, Children's Hospital of Pittsburgh of UPMC, Pittsburgh, PA

Council on Vascular Ultrasound Travel Grant Award Recipients:

Zardasht Jaff, MD, MBChB, FRCPC, Queen's University, Kingston, ON, Canada

Xuanyi Jin, MD, Mayo Clinic, Scottsdale, AZ

Council on Perioperative Echocardiography Travel Grant Award Recipients:

Priti Mehla, MD, Yale-New Haven Hospital, New Haven, CT

Bo Xu, MD, Heart and Vascular Institute, Cleveland Clinic, Cleveland, OH

Council on Cardiovascular Sonography Travel Grant Award Recipients:

Gilda Kadiu, RDCS, Children's Hospital of Michigan, Detroit, MI

Ian Crandall, BS, MS, RCS, Yale-New Haven Hospital, New Haven, CT

ASE Foundation Supports the Progress and Future of Echocardiography

The ASE Foundation plays a crucial role in supporting the progress and future of echocardiography through investment in the careers of investigators - but don't just

take our word for it. We asked this year's travel grant and scholarship winners for their thoughts, and this is what a few of them had to say:

"I am incredibly grateful for the opportunity that the ASE Council on Cardiovascular Sonography has offered me! The travel grant has given me the chance to attend an informational and inspirational conference. Hospital funding for sonographers has decreased significantly in recent years; ASE Foundation grants allow sonographers to attend invaluable meetings at ASE Scientific Sessions in order to keep up with the advancing field of echocardiography."
- Gilda Kadiu, RDCS, Council on Cardiovascular Sonography Travel Grant



"It was my greatest honor to be recognized as one of the recipients of this year's ASE Top 25 Investigators award. The inspiring discussions I was fortunate to have with top cardiologists from all around the world opened my mind to new horizons of the potentials of research in the field of echocardiography." - Alaa M. Omar, MD, PhD, Top 25



"Receiving the Katanick Scholarship Award was a huge encouragement for me to continue my work and to pursue my goals. The award also made it possible for me to attend the 28th Annual Scientific Sessions, which gave me a broader view to the future possibilities of the cardiovascular and echocardiography field, and advancements in patient care."
- Marjan Mira, Katanick Scholarship Award



"The ASE conference was an exceptional experience that provided face-to-face access to world-renowned echocardiographic experts. The conference created the perfect collegial atmosphere to share ideas and helped me to expand my network of mentors and collaborators. Listening to the personal and professional stories of some of the most respected individuals in the medical community was especially inspiring. I am extraordinarily grateful for this unique opportunity to meet and interact with such distinguished colleagues."
- Marija Vukicevic, PhD, Top 25



"I am very honored to be a recipient of the 2017 Alan D. Waggoner Sonographer Student Scholarship Award. This scholarship will be a tremendous help to establishing me in the echocardiography community and profession. Not only will it help fund my education, but it will allow me to learn from the best and brightest in echocardiography."
- Brandon Mays, Alan D. Waggoner Sonographer Student Scholarship



"I am immensely grateful for the ASE Vascular Council Travel Grant from the ASE Foundation this year, as it has allowed me to attend the recent Annual Sessions that were held in Baltimore. The workshops were excellent. The quality of the presentations was exceptional. As a trainee, I cannot stress how invaluable these opportunities are to enhance my knowledge and skills but also to inspire creative ideas for research projects."
- Zardasht Jaff, MD, MBChB, FRCPC, Council on Vascular Ultrasound Travel Grant



THANK YOU

The ASE Foundation proudly recognizes and thanks these individuals for their leadership and support of the 2017 Annual Appeal. Every gift is meaningful. Every contribution makes a difference. Together, we will continue to make a world of difference.

2017 ANNUAL APPEAL GIVING LEVELS

Hero - \$1500+

Visionary - \$1000-\$1499

Champion - \$500-\$999

Patron - \$100-\$499

Friend - \$15-\$99

HERO INVESTORS

Carolyn Altman, MD, FASE
Jose Banchs, MD, FASE*
Merri Bremer, EdD, RN, RDCS, ACS, FASE
Pamela Douglas, MD, FASE
William Freeman, MD, FASE
Stefanie Fry, MD, FASE
Richard Grimm, DO, FASE
Rebecca Hahn, MD, FASE
Allan Klein, MD, FASE
Vera Rigolin, MD, FASE
Geoffrey Rose, MD, FASE
Partho Sengupta, MBBS, MD, DM, FASE
Raymond Stainback, MD, FASE
Lissa Sugeng, MD, MPH, FASE*
Susan Wieggers, MD, FASE

VISIONARY INVESTORS

Edward Gill, MD, FASE
Linda Gillam, MD, FASE
Georgette Lammert, MBA, RCS, RDCS, FASE
Roberto Lang, MD, FASE
Howard Leong-Poi, MD, FASE
Jonathan Lindner, MD, FASE
David Orsinelli, MD, FASE
Patricia Pellikka, MD, FASE
Thomas Ryan, MD, FASE
Mikel Smith, MD, FASE - *In honor of Anthony DeMaria, MD, FASE. Thanks for teaching me about echo, but more importantly how to be a better doctor and teacher!*

CHAMPION INVESTORS

Abbas Ali, MD, RDCS, FASE
Federico Asch, MD, FASE
Barry Canaday, MS, RN, RDCS, RCS, FASE
Dali Fan, MD, PhD
George Gibson, MD
Joy Guthrie, PhD, ACS, RDMS, RDCS, RVT, FASE - *In memory of my mother, Fayette Zimmerman.*
Rachel Hughes-Doichev, MD, FASE
Judy Hung, MD, FASE
Karla Kurrelmeyer, MD, FASE
Stephen Little, MD, FASE
Do Doan Loi, MD
Sunil Mankad, MD, FASE*
Rick Meece, ACS, RDCS, RCS, RCIS, FASE
Maryellen Orsinelli, RN, RDCS, FASE
Phillip Patel, MD, FASE
Alan Pearlman, MD, FASE
Gregory Scalia, MD, MBBS, FASE
Jessica Spellman, MD

William Stewart, MD, FASE
Cynthia Taub, MD, FASE - *In honor of my mentors Linda Gillam, MD, FASE; Judy Mangion, MD, FASE; Anita Kelsey, MD, FASE; Judy Hung, MD, FASE; and Mario Garcia, MD, FASE.*
Lin Wang, MD, MS
Melissa Wasserman, RDCS, RCCS, FASE*
Kevin Wei, MD, FASE
David Wiener, MD, FASE
Ren Zhang, MD
William Zoghbi, MD, FASE

PATRON INVESTORS

Cyril Abrams - *In honor of Wilmington Health Jacksonville.*
Mark S. Adams, BS, RDCS, FASE
Nausheen Akhter, MD, FASE
Richard Allwood, BS
Bonita Anderson, MAPPLSC, DMU, FASE, ACS
Clara I. Angulo, BS, ACS, RDCS, FASE
Eddy Barasch, MD, FASE
Rolf Baumann
Holly Bazarnick, RDCS
Judith Becker, MD
Ricardo Benenstein, MD, FASE
Mary Bergh
Nicole Bhav, MD, FASE
Lori Blauwet, MD, FASE
Janine Broda
Hollie Carron, RDCS, FASE
Joao Cavalcante, MD, FASE
Frederick Cobey, MD, FASE
Meryl Cohen, MD, FASE
Keith Collins, MS, RDCS, FASE
Timothy Cordes, MD
Frederick Crock, MD
Nancy Cutler, MD, FASE
Jeanne DeCara, MD, FASE
Daniel Drake, MD
Benjamin Eidem, MD, FASE
Sibel Enar, MD, FASE
Gregory Ensing, MD, FASE
Alan Finley, MD, FASE
Craig Fleishman, MD, FASE
David Forst, MD, FASE
Michael Foster, FASE*
Benjamin Freed, MD, FASE
Mark Friedberg, MD, FASE
David Friedman, MD, FASE
Julius Gardin, MD, FASE
Sami Ghazal, MD, FASE
Yvonne Gilliland, MD, FASE
Kathryn Glas, MD, FASE
Beverly Gorman, RDCS*
Nisha Halo
Yuchi Han, MD, MMSc, FASE
Farid Jadbabaie, MD
Alan Katz, MD, FASE
Anita Kelsey, MD, FASE
Richard Kennedy, MD
Mary Etta King, MD, FASE - *In honor of Michael Picard, MD, FASE, for his leadership of the MGH Echo Lab and many years of working together as colleagues.*

James Kirkpatrick, MD, FASE
Berthold Klas
Peg Knoll, RDCS, RCS, FASE
Theodore Kolas, MD, FASE
Smadar Kort, MD, FASE
Itzhak Kronzon, MD, FASE
Christina LaFuria*
Melissa Layman
Steve Leung, MD, FASE
Dayuan Li
Sheldon Litwin, MD, FASE
Bernardo Lombo
Leo Lopez, MD, FASE
George Lui, MD
G. Burkhard Mackensen, MD, PhD, FASE
Kameswari Maganti, MD, FASE
Christopher Mahnke
Joan Main, BS, RDCS, MBA, FASE*
Judy Mangion, MD, FASE
Randolph Martin, MD, FASE
Scott Mattson, DO, FASE
Lawrence Melniker, MD, MS
James Mills
Carol Mitchell, PhD, RDMS, RDCS, RVT, RT(R), ACS, FASE
Victor Mor-Avi, PhD, FASE
Sharon Mulvagh, MD, FASE
Bernhard Mumm
Sumekala Nadaraj, MD
Sherif Nagueh, MD, FASE
Alina Nicoara, MD, FASE
Charles Nyman, MBBS
Jae Oh, MD, FASE
Erin O'Malley Tysko, MD
Wendy Pabich, MD
Margaret Park, BS, ACS, RDCS, RVT, FASE
David Parra, MD, FASE
Minesh Patel
Amit Patel, MD
Riti Patel, MD, FASE
Sandeep Patel, MD
Bharatbhusan Patel, RDCS, RVS, RDMS, FASE
Kavya Sudha Penujuri
Jennifer Perkins
Sue Phillip, RCS, FASE
Sorin Pislaru, MD, PhD, FASE
Gregg Pressman, MD, FASE
Min Pu, MD, PhD, FASE
Miguel Quinones, MD, FASE
Peter Rahko, MD, FASE
Marilyn Riley, RDCS - *In honor of Patricia Come, MD. Thanks for introducing me to echo and being my mentor in an incredible journey from Boston to Rwanda.*
Judy Rosenbloom, RDCS, FASE
Angela Saca, RVT, RCS
Thriveri Sanagala, MD, FASE
Muhamed Saric, MD, PhD, FASE
Russell Schiff, MD, FAAP, FACC, FASE
Elif Seda Selamet Tierney, MD, FASE
James Seward, MD, FASE
Elaine Shea, ACS, RCS, RCCS, FASE

Continues on next page >>

**Denotes an ASE Foundation sustainer.*

THANK YOU

The ASE Foundation proudly recognizes and thanks these individuals for their leadership and support of the 2017 Annual Appeal. Every gift is meaningful. Every contribution makes a difference. Together, we will continue to make a world of difference.

PATRON INVESTORS

(Continued)

Lauren Shearin
Giulia Sheftel, MD, FASE
Sasha Shillcutt, MD, FASE
Nikolaos Skubas, MD, FASE
Roman Sniecinski, MD, FASE
Neha Soni-Patel, BS, RDCS, FASE
Vincent Sorrell, MD, FASE, FACP-ASIM, FACC
Madhav Swaminathan, MD, FASE
Gregory Tatum, MD, FASE
Ritu Thamman, MD
James Thomas, MD, FASE
Wendy Tsang, MD
Pantila Vanichakarn, MD, FASE
Flordeliza Villanueva, MD
Jens-Uwe Voigt, MD
Arthur Weyman, MD, FASE
Kanoë Williams
Michael Wise
Donna Yap, RDCS, RVT
Luciana Young, MD, FASE
Jian Zhang
Qiong Zhao, MD, PhD, FASE
Jing-Sheng Zheng, MD, PhD, FASE
Karen Zimmerman, BS, ACS, RDCS (AE, PE), RVT, FASE

FRIEND INVESTORS

Michael Adams, RDCS (AE, PE), FASE
Jaswant Basraon
Frederman Concepcion, MD
Mary Alice Dilday*
Stacey Gardiner
V. Jason Godenir, MD
Hiroshi Homma, MD
Regina Knight-Richie, CCT
Pedro Kourtesis, MD
Douglas Misch*
Harriette Moran, RN, RDCS - *In honor of the entire staff of "Echoland" from a grateful "Rascal."*
David Morgan
Carol Mortier, RDCS, RVT, FASE
Raymond Musarra, RDCS, RCS, FASE*
Evelina Petrovets, RDCS
Douglas Richardson, MHA, RDCS, RVT, FASE - *In memory of Lillian Simmons. You will always be remembered in our hearts.*
David Sahn, MD, FASE - *In memory of Richard Kerber, MD, FASE, a wonderful colleague and friend.*
Lynne Seacord, MD - *In honor of Julio Perez, MD, FASE. Thanks for all you have done for me!*
Jeffrey Smallhorn, MBBS
Nicola Stanley, MD
Jeff Steinhoff
Cynthia Todd, RDCS - *In honor of Sharon Reimold, MD.*
Andrea Van Hoever
Thomas Van Houten, MPH, RDCS, FASE
Lynne Williams, MBBCh, PHD
Hak Wong, MD
Danita Yoerger Sanborn, MD, FASE

**Denotes an ASE Foundation sustainer.*

ASE FOUNDATION MISSION STATEMENT:

The ASE Foundation provides support for education, research, quality improvement, and professionalism for ASE members and the larger community of healthcare providers, and patients for whom cardiovascular ultrasound is essential.

As a 501(c)(3) nonprofit organization, contributions made to the ASE Foundation are tax deductible to the fullest extent of the law.

This list reflects all donations of \$50 or more made to the 2017 Annual Appeal between 1/1/2017 and 7/31/2017

We strive to be accurate and complete, but errors occasionally occur. Your assistance in bringing any inaccuracies to our attention is greatly appreciated.