

# ASEF *Fall 2015* Foundation

## NEWSLETTER

### In this issue:

<i>Join ASEF on Giving Tuesday!</i>	2
<i>The Organization of Giving Back</i>	3
<i>ASEF in Argentina - August 9-14, 2015</i>	4
<i>ASEF in Vietnam - August 17-20, 2015</i>	6
<i>Save the Dates: See you in Seattle June 2016</i>	8
<i>A Sustainer's Perspective: An Interview with Mike Foster</i>	9
<i>2015 Annual Appeal Investors</i>	10



### 'Tis Almost the Season for Gifting – but what about Giving?

By Tom Ryan, MD, FASE  
Annual Appeal Committee Chair

Fall is in the air here in Ohio, and that means the holiday season is just around the corner. If you're like me, the end of the year is when you think about making donations to the charitable organizations that resonate with you. For me, that includes the ASE Foundation.

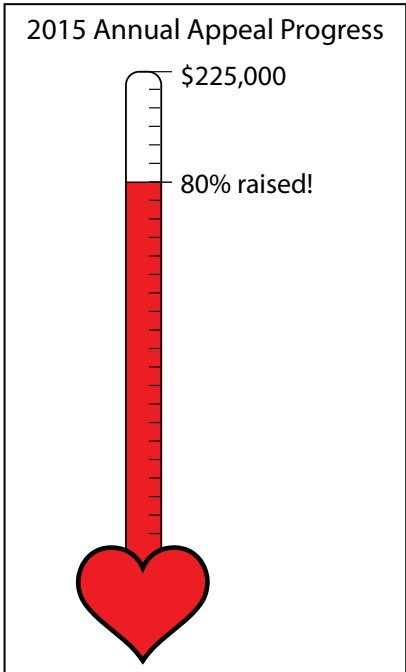
The Foundation has been busy the past few months! Two teams of volunteers spent time training clinicians and seeing patients at the Vietnam National Heart Institute/ Bach Mai Hospital in Hanoi, Vietnam and in partnership with the Argentine Federation of Cardiology (FAC) in Tartagal, Argentina. Our teams were able to reach over 900 patients through these events and train over 150 healthcare workers on image acquisition and interpretation. An impact of this magnitude simply would not be possible without the support of you, our donors. I would be remiss if I also did not thank the individuals and companies that donated both time and resources to make these events a success. You can read more about the events and the people who made them possible in the mission feature stories inside this issue of the newsletter. Together, we really are making a world of difference in the field of Echo.

But we can't stop now! Although our Annual Appeal has been incredibly productive so far this year, the Foundation needs your help to propel us to the finish line and reach our \$225,000 goal. We are so very close - 80% - your donation could be the one that gets the job done!

As you know, 100% of the donations we receive this year will go back out into projects next year. Your support today gives the Foundation the tools to provide quality care to underserved populations through mission events around the globe; create, disseminate, and even translate guidelines for echo labs across our community; fund travel grants and scholarships for the next generation of practitioners; and - very importantly - support training and research in the field of echocardiography.

Donations can be made in several ways. You can donate online at [asefoundation.org/donate](http://asefoundation.org/donate), mail a check to the attention of the Foundation at ASE Headquarters, or you can call Stacy Cheetham, Foundation Specialist, at 919-297-7169 at any time. This year, we are once again running a major #GivingTuesday campaign on December 1. Last year we raised over \$5,000 on this one day of giving! After the consumer overload of Black Friday and Cyber Monday, please think about giving back on December 1 and donating to the ASE Foundation.

One final note of thanks to each and every one who has donated for helping us reach our fundraising goal for the year and helping us support the future of Echo around the world. Don't forget, the last day to make a donation to the 2015 Annual Appeal is December 31st.



**Giving Tuesday is December 1st! Help us reach our goal of \$5,000. Thank you to Freeman for matching the first \$1,000 in donations received on Giving Tuesday.**

# F R E E M A N



# How Are YOU Giving Back to the Field of Echo this Holiday Season?

Last year we raised over \$5,000 in 24 hours. On **December 1st** please help us do that again!



"I, as a young Vietnamese refugee who fled after the war, wanted a better Vietnam in all things possible, but particularly in closing the gap in its healthcare disparities. I hope that this chapter of Team Hanoi doesn't end here, but draws more volunteers and financial support to ensure that countries like Vietnam progress and are able to share resources and technology to help their patients."

*Tu Nguyen, 2015 ASEF Vietnam mission volunteer*

**"In looking for hearts in trouble... we found friends and hearts full of love."**

Federico M. Asch, MD, FASE | 2015 ASEF Argentina mission volunteer

"Attending the 2015 ASE Scientific Sessions, after receiving an ASEF Alan D. Waggoner Student Scholarship Award, was an incredible experience that I will carry with me throughout my career."

*Steven Kiyokawa, Bellevue, WA*



100% of the donations raised directly support ASEF's efforts.



**ASE** Foundation ANNUAL APPEAL

Making a **WORLD** of Difference

ASEFoundation.org | #EchoWorldwide



# *The Organization of Giving Back*

## Making a World of Difference through Humanitarian Mission and Training Events

The concept of giving back takes many forms. For some, it's the physical effort of "doing something," committing time and sweat equity towards an effort. For others, "doing something" is a conscious gesture of support to a cause. Be it emotional, financial, or verbal, that backing is just as important as getting your hands dirty. You need both kinds of doers to truly make a difference - and an organizational framework to bring them together.

The Foundation's humanitarian mission and training events program is just one example of how our community makes giving back a reality. These events don't happen overnight, nor is a commitment of time and investment made lightly. Our ability to "do something" to advance cardiovascular ultrasound hinges entirely on organizing a cohesive, enduring effort of giving back.

It relies on colleagues who identify areas of need around the world by asking the all-important question - what could access to cardiovascular ultrasound training or technology accomplish here? They develop program ideas years in advance and then advocate tirelessly for their potential.

It takes a staff and Annual Appeal Committee dedicated to being financially and logistically responsible. They juggle multiple proposals for action by focusing the discussion on where the Foundation's allocations of time, money, and commitment each year can make the most impact, not just at the onset but also with a long-term residual effect.

Once a program gets the green light to go ahead, it's then dependent on finding volunteers willing to commit time, professional expertise, and personal financial investment towards its implementation. It takes team leaders and staff finding partners both at home and abroad - vendors to supply equipment, in-country clinicians and hospitals to manage follow-up care for patients, as well as other local resources in-country - and bring them all together into a cohesive working unit. That collaboration doesn't end when teams return home. Teams work together for months, and sometimes years, after an event to evaluate patient data and continue training efforts, and then often go on to advance new opportunities that arise from the collaborative community born during the on-site effort.

It also depends on you, our donors. You are the ultimate champions for the advancement of cardiovascular ultrasound, and our goal is to be THE organization you trust to give back in a truly extraordinary way - such as in our recent events in Argentina and Vietnam. We hope you enjoy learning more about them. And we're excited to see where you will make a world of difference next. ■

### *ASEF has supported seven events over the last four years:*

- Sirsa, India - January 2012
- Sirsa, India - December 2012
- Hue, Vietnam - April 2013
- Bangalore, India - August 2014
- Los Angeles, California - September 2014
- Tartagal, Argentina - August 2015
- Hanoi, Vietnam - August 2015

#### *The scope of our impact:*

- Over 250 volunteers
- Over 200 healthcare workers trained
- Over 3,400 individuals scanned

# ASEF in Argentina: August 9-14, 2015

Early in August, the ASE Foundation partnered with the Argentine Federation of Cardiology (FAC) to identify and treat cardiovascular disease in native populations in northern Argentina, near the Bolivian border. A volunteer team of eight U.S.-based physicians and sonographers traveled to Tartagal, where they were joined by 25 cardiologists from across Argentina and Brazil.

## *Team Tartagal by the numbers:*

**653 individuals** - men, women, and children from the local indigenous populations - received medical care during a four-day period. This was double the number of projected studies. Due to their lifestyle, most had never received healthcare from a physician.

*“This was one of my best moments in my career, I am so happy to be part of this.”*

Roberto M. Lang, MD, FASE

*“We believe the success of this mission was not just in bringing highly qualified cardiologists and high tech echo machines, it was mostly for the way it was conducted: starting by educating ourselves about the cultures and traditions of the indigenous communities, and involving their leaders from the initial planning stages so we could care for them respectful of their concerns, their culture and their place.”*

Federico M. Asch, MD, FASE

*“We lived an amazing experience, crossing the line between different cultures but finding on the other side just human beings like us. We achieved one of the best things that we could have achieved – the confidence of people who usually are rejected and discriminated against in the western culture. But the biggest emotional impact was the deep understanding and teamwork of many different people coming together from different states, provinces, and continents who became friends in just a few days. We will never forget this experience!!”*

Ricardo Ronderos, MD, PhD, FASE

## **TEAM TARTAGAL ONSITE PARTICIPANTS**

**Federico M. Asch, MD, FASE\*** - Washington, DC, USA

**Gustavo Avegliano, MD, PhD** - La Plata, Argentina

**Marcia M. Barbosa, MD, PhD, FASE\*** - Belo Horizonte, Brazil

**Rigo Boccanera, MD** - San Francisco, Provincia de Cordoba, Argentina

**Hector Busto, RDCS, FASE\*** - Ogden, Utah, USA

**Mario Cerruti, MD** - Tartagal, Argentina

**Julieta Alvarez Daneri** - Agimed clinical support, Buenos Aires, Argentina

**Alejandro Diaz, MD, PhD** - Tandil, Provincia de Buenos Aires, Argentina

**Julia Diaz Carrizo (Tecnica)** - Salta, Argentina

**German Dubs** - Ultrasound Manager, Agimed, Buenos Aires, Argentina

**Analia Fuentes, MD** - Salta, Argentina

**Pablo Ernesto Garófalo, MD\*** - Rosario, Santa Fe, Argentina

**Narcisa Gutierrez, MD** - Salta, Argentina

**Martín Ibarrola, MD, FASE\*** - Buenos Aires, Argentina

**Cecilia Juarez, BS, AAS, RDCS\*** - Tewksbury, Massachusetts, USA

**Leda Kantor** - Tartagal, Argentina

**Georgeanne Lammertin, RDCS, RCS, FASE\*** - North Salt Lake, Utah, USA

**Lili Lang** - Chicago, Illinois, USA

**Roberto M. Lang, MD, FASE\*** - Chicago, Illinois, USA

**José Antonio LeFavi, MD** - Salta, Argentina

**Juan Alberto Martina, MD** - Rafaela, Provincia de Santa Fe, Argentina

**Miguel Angel Chavez Medina, MD** - Salta, Argentina

**Jimena Miragaya** - Ultrasound BL Manager, Philips Argentina, Buenos Aires, Argentina

**Leonardo Mora, MD** - Tartagal, Argentina

**Carlos Olivello, MD** - Resistencia, Provincia de Chaco, Argentina

**Bharatbhusan Patel, RDCS, RDMS, RVS, FASE\*** - Nutley, New Jersey, USA

**Aldo Prado, MD, FASE\*** - Tucumán, Argentina

**Rhonda Price** - ASE Staff, Raleigh, North Carolina, USA

**Rodrigo del Rio** - Philips truck driver, Buenos Aires, Argentina

**Jose Daniel Rivera, RCS\*** - Durham, North Carolina, USA

**Veronika Rodriguez, BS, RDCS, FASE\*** - Long Beach, California, USA

**Alejandra Rolón** - Agimed clinical support, Buenos Aires, Argentina

**Ricardo E. Ronderos, MD, PhD, FASE\*** - La Plata, Argentina

**Carina Scicoli, MD** - Salta, Argentina

**Jorge Secchi, MD** - Salta, Argentina

**Walter Stoermann, MD\*** - San Juan, Argentina

**Jorge Tazar, MD\*** - Tucumán, Argentina

**Miguel Ángel Tibaldi, MD** - Cordoba, Argentina

**Mario Yellamo, MD** - Orán, Argentina

\*ASE Members

Learn more about Team Tartagal in ASE's *ECHO*, Vol. 4 Issue 1 @ [issuu.com/ase\\_echo](http://issuu.com/ase_echo) and @ [ASEFoundation.org/argentina](http://ASEFoundation.org/argentina)



## THANK YOU

A special thank you goes to our industry partners – Philips and Agimed – for providing the ultrasound equipment our team used, providing the transportation of the equipment to a remote location in northern Argentina, and also providing in-country technical support.



Learn more about Team Tartagal in ASE's *ECHO*, Vol. 4 Issue 1 @ [issuu.com/ase\\_echo](http://issuu.com/ase_echo) and @ [ASEFoundation.org/argentina](http://ASEFoundation.org/argentina)

# ASEF in Vietnam: August 17-20, 2015

Also in August, the ASE Foundation sent a volunteer team of 10 U.S.-based physicians and sonographers to Vietnam for a week long collaboration with the Vietnam National Heart Institute, Bach Mai Hospital in Hanoi. Their purpose was to participate in an exchange of educational lectures and training with clinicians from around Hanoi, and provide clinical care for patients in a rural village outreach.

## ***Team Hanoi by the numbers:***

- **Over 150 healthcare workers** trained on image acquisition and interpretation
- **279 elderly men and women scanned** in 1 day at a village outreach event
- **1 M7 portable cardiac ultrasound system** donated to the Vietnam National Heart Institute from Mindray

*"I volunteered for the ASEF Vietnam mission to try to help others perhaps less fortunate than myself, but sometime during the trip, it became crystal clear that I was receiving more than I was able to give. This mission gave me a greater sense of community, friendship and accomplishment than anything I have done in my career. I will carry that feeling of happiness and satisfaction with me forever."*

Rebecca Hahn, MD, FASE

*"I came to Vietnam to help, but I was helped myself. I saw that this county that I had fled as a toddler is rebuilding and that there is hope for a brighter future. I was floored by overwhelming generosity and hospitality from a nation coming out of a period of isolation and restrictions. It was incredible to be a recipient of this. Team Hanoi worked hard and our work will leave a lasting impression."*

Thanh Kirkpatrick, MD, MPH

*"What we did together was meaningful and will live with me forever. Thank you all for taking me in to the fold and reminding me that echo is about people, not just hearts."*

Jill Inafuku, BS, RDMS, FASE

## ***TEAM HANOI ONSITE PARTICIPANTS***

### ***ASEF Team Leaders:***

**Jose Banchs, MD, FASE** - Houston, Texas, USA

**James Kirkpatrick, MD, FASE** - Philadelphia, Pennsylvania, USA

### ***Vietnam National Heart Institute, Bach Mai Hospital Team Leaders:***

**Prof. Do Doan Loi, MD, PhD**

**Nguyen Thi Thu Hoai, MD, PhD**

**Tuan Le Thanh, MD**

---

**David Adams, RCS, RDCS, FASE** - Durham, North Carolina, USA

**Rebecca Hahn, MD, FASE** - New York, New York, USA

**Jill Inafuku, BS, RDMS, FASE** - Kaneohe, Hawaii, USA

**Thanh Kirkpatrick, MD, MPH** - Translator, Philadelphia, Pennsylvania, USA

**Tu Nguyen** - Translator, Houston, Texas, USA

**Rachel Quang, RDCS** - Brunswick, Maine, USA

**Liza Sanchez, RCS, FASE** - Houston, Texas, USA

**William Song** - General Manager, Mindray Medical Vietnam, Ho Chi Minh City, Vietnam

**Nova Sprague, RDCS** - Houston, Texas, USA

**Andrea Van Hoever** - ASE Staff, Raleigh, North Carolina, USA

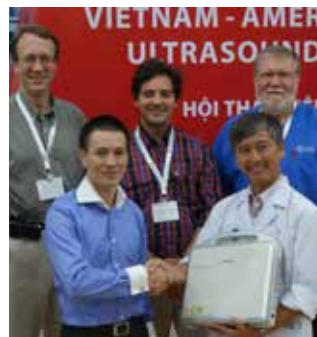
**Kin Wen** - Mindray clinical support, Shenzhen, People's Republic of China



Learn more about Team Hanoi in ASE's *ECHO*, Vol. 4 Issue 1 @ [issuu.com/ase\\_echo](http://issuu.com/ase_echo) and @ [ASEFoundation.org/vietnam](http://ASEFoundation.org/vietnam)



## THANK YOU



**mindray**

A special thank you goes to our industry partner Mindray for providing the ultrasound equipment our team used, in-country technical support, and sponsorship of the first Vietnam-America Cardiac Ultrasound Symposium. Mindray also donated a portable echocardiography system to the Bach Mai Hospital, insuring that our team's training efforts will endure and the practice of echocardiography will continue to advance long after our limited time in Hanoi.

Learn more about Team Hanoi in ASE's *ECHO*, Vol. 4 Issue 1 @ [issuu.com/ase\\_echo](http://issuu.com/ase_echo) and @ [ASEFoundation.org/vietnam](http://ASEFoundation.org/vietnam)

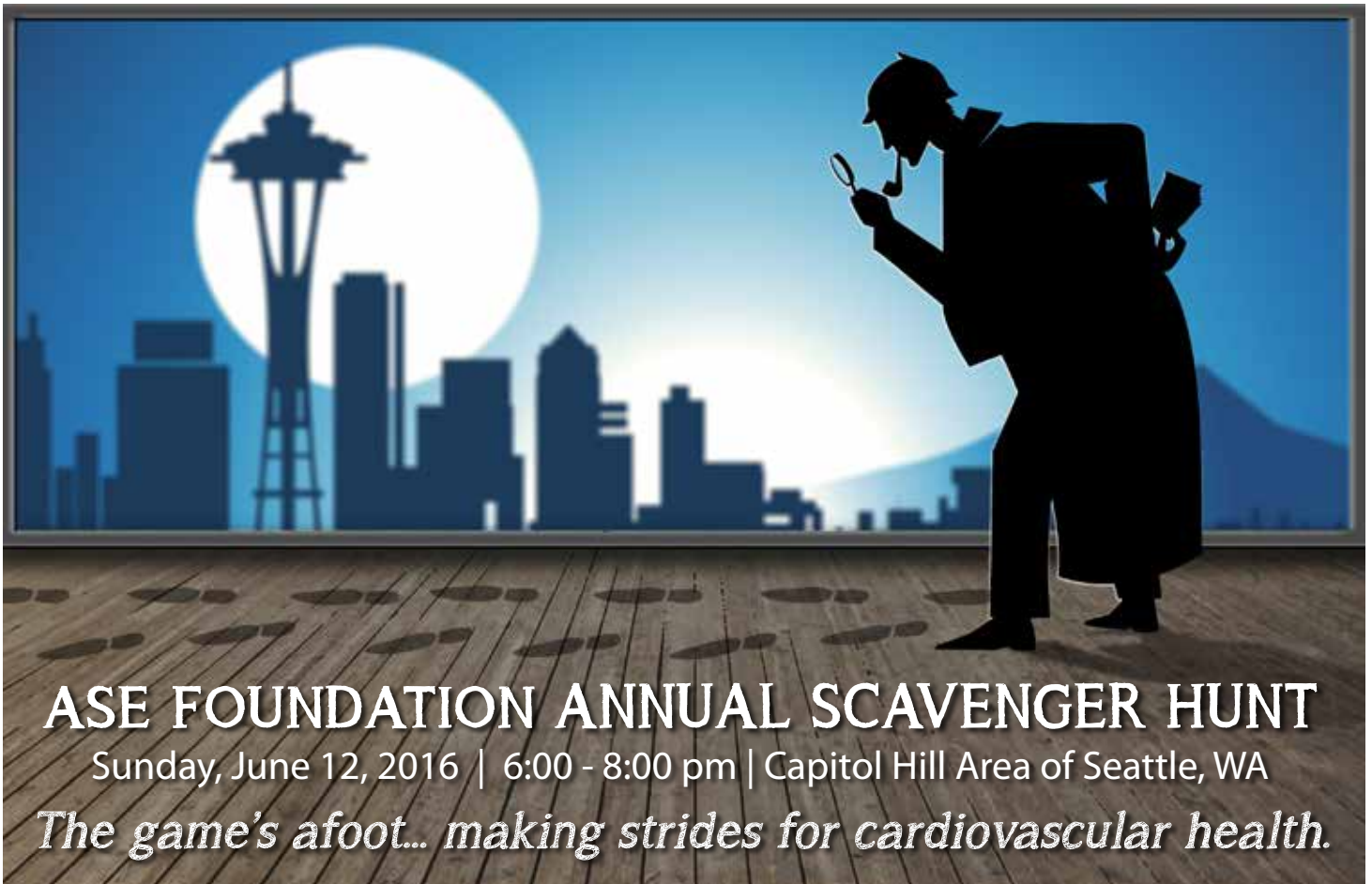
7th Annual  
ASE Foundation

# RESEARCH AWARDS GALA

*Celebrating 20 Years of Funding Cardiovascular Ultrasound Research*

The Grand Hyatt Hotel, Seattle, WA  
Saturday, June 11, 2016 | 7:00 - 11:00 pm

Proceeds from this event support the ASE Foundation's research awards program



## ASE FOUNDATION ANNUAL SCAVENGER HUNT

Sunday, June 12, 2016 | 6:00 - 8:00 pm | Capitol Hill Area of Seattle, WA

*The game's afoot... making strides for cardiovascular health.*





Mike Foster, RCS,  
RDCS, FASE

## A Sustainer's Perspective: An Interview with Mike Foster

ASE Foundation Sustainers are a dedicated group of donors giving back to the field on a monthly basis. Their continual gifts provide steady funding and increased momentum to advance the field of cardiovascular ultrasound. In this ongoing interview series, we talk to Sustainers about what inspires them to support the Foundation and why they believe sustained giving creates sustained impact.

### What inspired you to become a monthly Sustainer to the ASE Foundation?

I realized that I was going to support the Foundation indefinitely and thought being a sustainer was a higher level of commitment towards that support.

### What led you to join ASE and become involved with Society membership?

My instructor Dennis Carney taught us that part of being a professional is to support a professional society. He encouraged us to start as students and recommended ASE as a great professional society.

### How did you come to be in this field? Tell us more about your professional career.

I was working at Heart Clinics Northwest in the billing office pulling "Echo" reports as part of the job. When asking, "What is an Echo?" I was told Spokane Community College had a degree program for that skill, so I enrolled.

I was offered a chance to do my last clinical rotation at the Duke University "Cardiac Diagnostic Unit." I had learned of Dr. Joseph Kisslo and David Adams from Dennis and watched some clips from "Echo in Context" (their medical teleconference at Duke).

I went to Duke in April-June 1999 and started my first and current job in Echocardiography. Since then, I have had a great opportunity to work with a group of techs, nurses, exercise physiologists, and doctors (led by Dr. Eric Velazquez) who demand excellence of each other in the tests that serve our patients.

I have also worked with Cardiovascular Credentialing International. I'm on the board of directors for the North Carolina Ultrasound Society. I have presented at the ASE Scientific Sessions, been on committees and become a Fellow of the American Society of Echocardiography (FASE.) I have had teaching and research opportunities at Duke and in Kenya.

### Do you think there are other areas that the Foundation should be focusing its initiatives on in the future?

I would like to see the Foundation continue bringing students, techs, and doctors to the Scientific Sessions with travel grants. I like the translation of guidelines in different languages. Since our membership extends outside of the USA, I like that we are supporting efforts abroad.

### What do you think is the most important thing for new members to know about the Foundation?

Our annual dues aren't enough to cover everything many of us want ASE to support, so it's important to give any amount toward the Foundation's work. ■

Would you prefer to give in smaller increments throughout the year? Become a Sustainer!

Visit [ASEFoundation.org/sustainer](http://ASEFoundation.org/sustainer) to learn more about this monthly giving option and sign up. Need more information?

Please call or email us at  
919-861-5574 or  
[foundation@asecho.org](mailto:foundation@asecho.org).



# ASE Foundation

## THANKS!

*\*Investor list reflects contributions made to the Annual Appeal from January 1, 2015 through September 30, 2015.*

*The ASE Foundation thanks the following investors for their demonstrated leadership and generosity:\**

### Lead Investors

**Physicians \$2,000+**  
**All others \$1,000+**

David Adams, RCS, RDCS, FASE  
Jose Banchs, MD, FASE  
Merri Bremer, EdD, RN, RDCS, ACS, FASE\*  
Rama Desai  
Harvey Feigenbaum, MD, FASE  
Edward Gill, MD, FASE  
Rebecca Hahn, MD, FASE  
Georgeanne Lammertin, MBA, RCS, RDCS, FASE  
Roberto Lang, MD, FASE  
Steven Lester, MD, FASE  
Joan Main, BS, RDCS, MBA, FASE\*  
Bharatbhusan Patel, RDCS, RVS, RDMS, FASE  
Jaydev Patel on behalf of the Patel Family Foundation  
Miguel Quiñones, MD, FASE  
Vera Rigolin, MD, FASE  
Geoffrey Rose, MD, FASE  
David Rubenson, MD, FASE  
Thomas Ryan, MD, FASE  
Douglas Shook, MD, FASE  
Raymond Stainback, MD, FASE  
Lissa Sugeng, MD, MPH, FASE  
A. Jamil Tajik, MD, FASE  
Susan Wieggers, MD, FASE

### Visionary Investors

**Physicians \$1,000+**  
**All others \$500+**

Ford Ballantyne, III, MD  
Patrick Coon, RCCS, RDCS, FASE  
Deborah Creighton, RDCS, RVT, FASE  
Teri Dittrich, RDCS, FASE  
Linda Gillam, MD, FASE  
Steven Goldstein, MD, FASE  
Joe Kreeger, ACS, RCCS, RDCS, FASE\*  
Stephen Little, MD, FASE  
Rosemary Magee and Bridget Rubin in honor of David Adams, RCS, RDCS, FASE  
Maryellen Orsinelli, RN, RDCS, FASE  
Peter Rahko, MD, FASE  
Melissa Wasserman, RDCS, FASE

### Partner Investors

**Physicians \$500+**  
**All others \$250+**

Deborah Agler, RCT, RDCS, FASE  
Diane Buckner, RDCS  
Hollie Carron, RDCS, FASE  
Stefanie Fry, MD, FASE  
Ming Chon Hsiung, MD  
Rachel Hughes-Doichev, MD, FASE  
Brenda Khadije  
Allan Klein, MD, FASE  
Peg Knoll, RDCS, FASE  
Howard Leong-Poi, MD, FASE  
Sunil Mankad, MD, FASE\*  
Elizabeth McIlwain, MHS, RCS, FASE  
Sharon Mulvagh, MD, FASE  
Stephanie Nay, RDCS, RCCS, FASE  
Evelina Petrovets, RDCS  
Muhammad Qureshi, MD  
Retu Saxena, MD  
Nikolaos Skubas, MD, FASE  
David Wiener, MD, FASE  
Anna Woo, MD, SM

### Advocate Investors

**Physicians \$250+**  
**All others \$100+**

Jayashri Aragam, MD, FASE  
Valerie Armstead, MD  
Federico Asch, MD, FASE  
Gerard Aurigemma, MD, FASE  
Rolf Baumann  
Abby Buerkett  
Barbara Conwell, RDCS, RVT, RDMS  
Benjamin Eidem, MD, FASE  
Dali Fan, MD, PhD, FASE  
Brian Fey, BA, RDCS (AE/PE), FASE  
Lise Fishman  
David Forst, MD, FASE  
Peter Frommelt, MD, FASE  
Kymerly Glyde, RDCS, FASE  
Richard Grimm, DO, FASE  
Kenneth Horton, RCS, FASE  
Judy Hung, MD, FASE  
Wael Jaber, MD  
Thomas Johnson, MD, FASE  
Berthold Klas  
Smadar Kort, MD, FASE  
Oi Ling Kwan, BS, RDCS, FASE  
Feroze Mahmood, MD, FASE  
Richard Martinez, MD, FASE  
Gerald Marx, MD, FASE  
Michael Mastela, MSEE  
Rick Meece, ACS, RDCS, RCIS, FASE  
Lynette Mendoza, MBA, RDCS, FASE  
Carol Mitchell, PhD, RDMS, RDCS, RVT, RT(R), FASE  
Mark Monaghan, PhD  
G. Wayne Moore, BSC, MBA, FASE  
James Moran, MD  
Dakshina Murthy, MD, FASE  
Sherif Nagueh, MD, FASE  
Joan Olson, BS, RDCS, RVT, FASE  
Margaret Park, BS, ACS, RDCS, RVT, FASE  
Amit Patel  
Dilip Patel  
Andy Pellett, PhD, RCS, RDCS, FASE  
Tammy Plumb  
Angie Porter\*  
A. Jody Rowland, MD  
Angela Saca  
Joseph Sanborn  
Gregory Sandidge, RDCS  
Russell Schiff, MD, FASE  
Partho Sengupta, MBBS, MD, DM, FASE  
Mikel Smith, MD, FASE  
Roman Sniecinski, MD, FASE  
Kirk Spencer, MD, FASE  
Juan Villafane, MD, FASE  
Sandra Witt, RDCS, FASE  
Pierre Wong, MD  
Luciana Young, MD, FASE  
Karen Zimmerman, BS, ACS, RDCS (AE,PE), RVT, FASE  
William Zoghbi, MD, FASE

### ASE Foundation Mission Statement:

The ASE Foundation provides support for education, research, quality improvement, and professionalism for ASE members and the larger community of healthcare providers, and patients for whom cardiovascular ultrasound is essential.

As a 501(c)(3) nonprofit organization, contributions made to the ASE Foundation are tax deductible to the fullest extent of the law.

Please visit the Foundation website at [ASEFoundation.org](http://ASEFoundation.org) for the most up-to-date list of Foundation supporters.

*\*Denotes an ASE Foundation Sustainer*

## Associate Investors

### Physicians & All others \$50+

Abdullah Alkhamari, MD  
 Carolyn Altman, MD, FASE  
 Janine Arruda, MD  
 Jeanne Baffa, MD, FASE  
 Harald Becher, MD, PhD  
 Sagit Ben Zekry, MD  
 Alvin Stephen Blaustein, MD  
 Lori Blauwet, MD, FASE  
 Mary Beth Brady, MD, FASE  
 Leslie Brookfield, MD  
 Patricia Brown  
 Michael Cahalan, MD  
 Devyani Chowdhury  
 Frederick Cobey, MD, FASE  
 Meryl Cohen, MD, FASE  
 Keith Collins, MS, RDCS, FASE  
 Jeanne DeCara, MD, FASE  
 Kayla Devine  
 Evan Dixon, MD  
 Mamata Eagam, MD  
 William Elliott, DO  
 Sibel Enar, MD, FASE  
 Gregory Ensing, MD, FASE  
 Fang Fang, MD  
 Julie Fetters, MD, FASE  
 Alan Finley, MD, FASE  
 Craig Fleishman, MD, FASE  
 David Friedman, MD, FASE

Julius Gardin, MD, MBA, FASE  
 Volker Gerling, MD  
 Tal Geva, MD, FASE  
 Niels Giddins  
 Kathryn Glas, MD, FASE  
 V. Jason Godenir, MD  
 Aasha Gopal, MD, FASE  
 Sheryl Goss, RDCS  
 Vitor Guerra, MD  
 Brian Hoit, MD, FASE  
 Edward Hulten, MD, MPH  
 Juliet Jensen, RDCS  
 Garvan Kane, MD, FASE  
 Martin Keane, MD, FASE  
 James Kirkpatrick, MD, FASE  
 Georgia Korkokios, RDMS, RDCS,  
 RVT  
 John Kovalchin, MD, FASE  
 Chris Kramer, BA, RDCS, FASE  
 Itzhak Kronzon, MD, FASE  
 Karla Kurrelmeyer, MD, FASE  
 Wyman Lai, MD, MPH, FASE  
 Ruby Lara, RDCS (PE,FE), FASE\*  
 John Larry, MD  
 Sheldon Litwin, MD, FASE  
 Leo Lopez, MD, FASE  
 G. Burkhard Mackensen, MD, PhD,  
 FASE

Michael Main, MD, FASE  
 Judy Mangion, MD, FASE  
 Carlene McClanahan, RDCS  
 Lawrence Melniker, MD, MS\*  
 Victor Mor-Avi, PhD, FASE  
 Sandip Mukherjee  
 Bernhard Mumm, MSc  
 Deirdre Murphy, MD  
 Thippeswamy Murthy, MD  
 Raymond Musarra, RDCS, RCS,  
 FASE  
 Tasneem Naqvi, MD, FASE  
 Dale Nelson, MD  
 Alina Nicoara, MD, FASE  
 Jill Odabashian, RDCS, FASE  
 Jae Oh, MD, FASE  
 Yetunde Olowe, MD, PhD  
 David Orsinelli, MD, FASE  
 Matthew Parker, MD  
 Sandeep Patel, MD  
 Alan Pearlman, MD, FASE  
 Patricia Pellikka, MD, FASE  
 Michael Picard, MD, FASE  
 Juan Plana, MD, FASE  
 Kit Powers, MD, FASE  
 Emilio Raimondo, MD  
 Vijay Rao, MD, PhD, FASE  
 Brad Roberts, RCS, FASE

Veronika Rodriguez, RDCS, FASE  
 Lawrence Rudski, MD, FASE  
 Thriveni Sanagala, MD, FASE  
 Gonzalo Saravi, MD, FASE  
 Marielle Scherrer-Crosbie, MD, PhD,  
 FASE  
 Thomas Schleeter, MD  
 Jackie See, MD  
 Aldona Siwinska, MD  
 Timothy Slesnick, MD, FASE  
 Neha Soni-Patel, BS, RDCS  
 William Stewart, MD, FASE  
 Madhav Swaminathan, MD, FASE  
 Nancy Szabo-Boryczewski, RDCS,  
 AE, PE, FASE  
 Cynthia Taub, MD, FASE  
 Viyada Thongouthaitip, MD  
 John Toptine, RCS, RDCS, FASE  
 Wendy Tsang, MD  
 Maria Vivaldi, MD  
 Anh Vu, MD  
 Rory Weiner, MD, FASE  
 Richard Weiss, MD, FASE  
 Neil Weissman, MD, FASE  
 Arthur Weyman, MD, FASE  
 Malissa Wood, MD, FASE

## Look Who's Giving! The Foundation's Most Generous Monthly Donors

JANUARY



Susan E. Wieggers, MD, FASE

JANUARY



A. Jamil Tajik, MD, FASE

FEBRUARY



Edward A. Gill, MD, FASE

MARCH



Rebecca T. Hahn, MD, FASE

MARCH



Geoffrey A. Rose, MD, FASE

APRIL



Vera H. Rigolin, MD, FASE

MAY



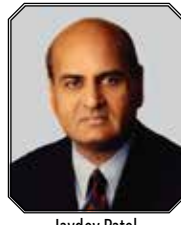
Jose Banchs, MD, FASE

JUNE



Thomas J. Ryan, MD, FASE

JULY



Jaydev Patel,  
Patel Family Foundation

AUGUST



Anonymous

SEPTEMBER



Anonymous

2015 ANNUAL APPEAL

Making a WORLD of Difference

